



Price
£475,000

Freehold

3x  1x  1x 

**Woburn Avenue,
Hornchurch, Essex,
RM12**



Main features

- Good size family home in excellent condition throughout
- Detached garage & off road parking
- Close to Harrow Lodge Park, Bretons & The Chase
- Situated less than half a mile to Elm Park Station & amenities

Accommodation

GROUND FLOOR

Porch
Hallway
Lounge/Dining room: 26'0 x 16'9 maximum (7.93m x 5.11m)
Kitchen/Breakfast room: 15'0 x 7'5 (4.58m x 2.26m)

FIRST FLOOR

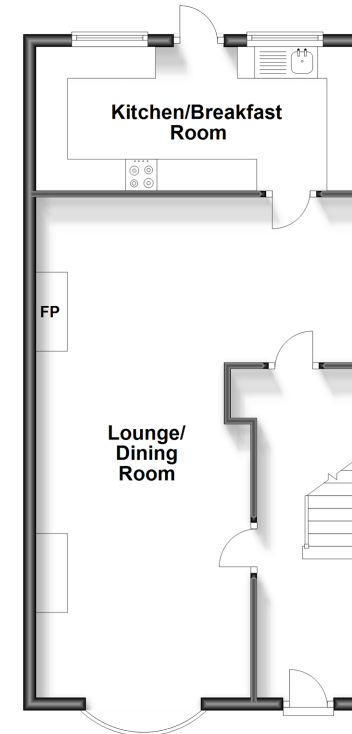
Landing
Bedroom 1: 13'6 x 10'2 (4.12m x 3.10m)
Bedroom 2 : 11'9 x 10'2 (3.58m x 3.10m)
Bedroom 3 : 10'6 x 6'5 (3.20m x 1.96m)
Bathroom

OUTSIDE

Rear Garden
Off road parking
Garage

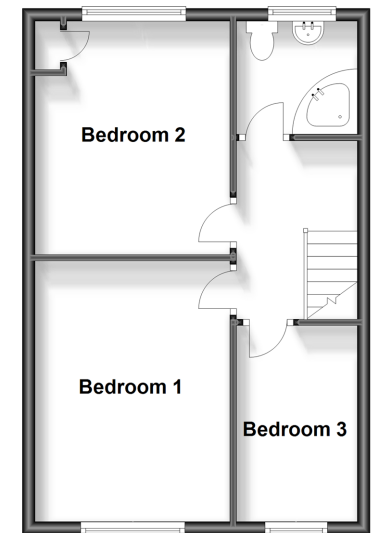
Ground Floor

Approx. 52.9 sq. metres (569.9 sq. feet)



First Floor

Approx. 40.5 sq. metres (436.1 sq. feet)



Call Hornchurch - 01708 437777 ■ douglasallen.co.uk

- A private rental licensing scheme applies to some properties in this area, please contact us before proceeding
- Legal advice should be taken to verify fixtures/fittings, planning, alterations and/or lease details
- Appliances & services are untested, dimensions are approximate and floor plans are not to scale



51910043/20231023/CC1/DT