



Guide Price
£550,000

Freehold

4x  2x  3x 

**Macdonald Avenue,
Hornchurch, Essex,
RM11**

OVER 60?

Secure this property
for up to **59% less!**



Video Tour available



**DOUGLAS
ALLEN**

Helping you move forwards



Main features

- Spacious and well presented end of terrace family home
- Double storey rear & side extension, potential to extend further
- Offered with no onward chain
- Less than a mile to station
- Ground floor shower room
- Sought after location for local primary and secondary schools

Accommodation

GROUND FLOOR

Hallway

Lounge: 12'11 x 10'7 (3.94m x 3.23m)

Play room: 19'3 x 6'6 (5.87m x 1.98m)

Shower room/w.c.

Family area: 10'2 x 9'4 (3.10m x 2.85m)

Dining area: 9'4 x 9'2 (2.85m x 2.80m)

Kitchen/breakfast room: 13'3 x 9'2 (4.04m x 2.80m)

FIRST FLOOR

Landing

Bedroom 1: 12'9 x 11'7 (3.89m x 3.53m)

Bedroom 2: 12'9 x 6'7 (3.89m x 2.01m)

Bedroom 3: 12'11 x 9'11 (3.94m x 3.02m)

Bedroom 4: 9'11 x 9'11 (3.02m x 3.02m)

Bathroom

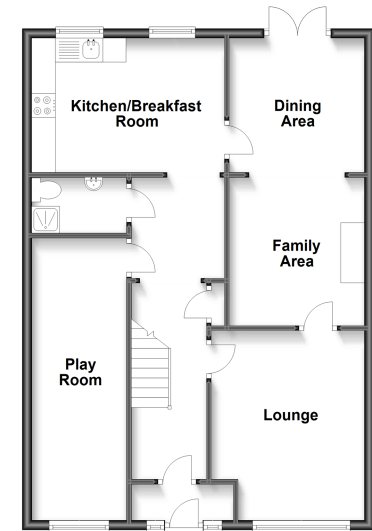
OUTSIDE

Rear garden

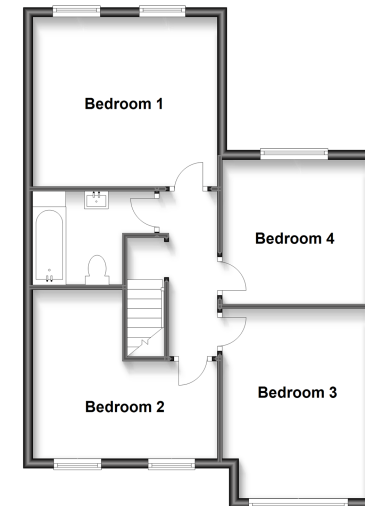
Off road parking

Garage: 18'2 x 6'1 (5.54m x 1.86m)

Ground Floor
Approx. 70.2 sq. metres (755.6 sq. feet)



First Floor
Approx. 57.3 sq. metres (617.2 sq. feet)



Call Hornchurch - 01708 437777 ■ douglasallen.co.uk

- A private rental licensing scheme applies to some properties in this area, please contact us before proceeding
- Legal advice should be taken to verify fixtures/fittings, planning, alterations and/or lease details
- Appliances & services are untested, dimensions are approximate and floor plans are not to scale
- Through a Homewise Home For Life Plan people aged 60+ can secure this property for up to 59% less, by purchasing a Lifetime Lease.



51907771/20240301/CC1/DT