



Price
£350,000

Freehold

3x  1x  1x 

**Morris Court, Waltham
Abbey, Essex, EN9**

OVER 60?

Secure this property
for up to **59% less!**

 **DOUGLAS
ALLEN**
Helping you move forwards



Main features

- Terraced house with conservatory
- Opportunity to put your own stamp on this home
- Good size accommodation with garden and ample parking nearby
- Popular location in Waltham Abbey and Epping nearby
- Easy access to the M25 and M11

Accommodation

GROUND FLOOR

Entrance Hall

Lounge/Diner: 21'0 x 12'3 (6.41m x 3.74m)

Kitchen: 9'10 x 6'10 (3.00m x 2.08m)

Conservatory: 9'8 x 5'10 (2.95m x 1.78m)

FIRST FLOOR

Landing

Bedroom 1: 12'10 x 10'7 (3.91m x 3.23m)

Bedroom 2: 13'0 x 10'1 (3.97m x 3.08m)

Bedroom 3: 8'2 maximum x 7'5 maximum (2.49m x 2.26m)

Family Bathroom

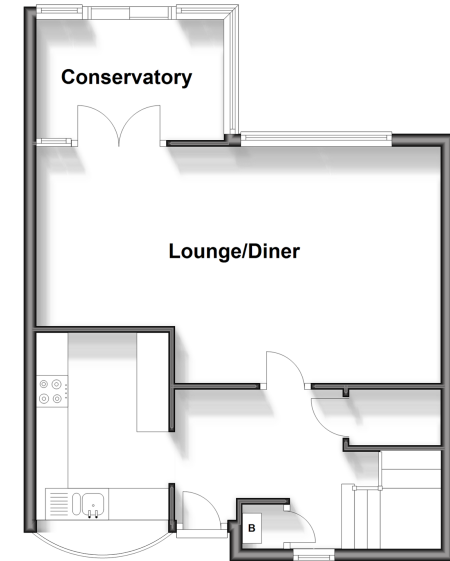
OUTSIDE

Rear Garden

Front Garden

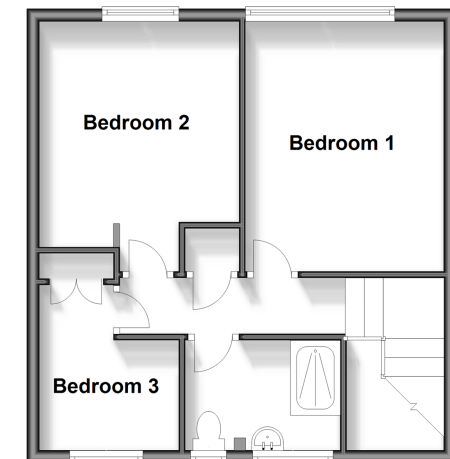
Ground Floor

Approx. 45.3 sq. metres (488.1 sq. feet)



First Floor

Approx. 43.4 sq. metres (467.2 sq. feet)



Call Epping - 01992 560600 ■ douglasallen.co.uk

- A private rental licensing scheme applies to some properties in this area, please contact us before proceeding
- Legal advice should be taken to verify fixtures/fittings, planning, alterations and/or lease details
- Appliances & services are untested, dimensions are approximate and floor plans are not to scale
- Through a Homewise Home For Life Plan people aged 60+ can secure this property for up to 59% less, by purchasing a Lifetime Lease.



51509045/20240511/KA/IW