



Price
£475,000

Freehold

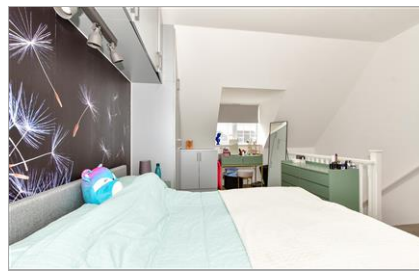
3x  2x  1x 

**Plover Crescent,
Matching Green, Harlow,
Essex, CM17**

OVER 60?

Secure this property
for up to **59% less!**

 **DOUGLAS
ALLEN**
Helping you move forwards



Main features

- Semi-detached house overlooking a green area
- En-suite shower room to bedroom 1
- Off road parking for 2 cars
- Located within new housing development
- NHBC guarantee
- Short drive to access the M11

Accommodation

GROUND FLOOR

Entrance Hall
Kitchen/Diner: 17'3 x 10'6 (5.26m x 3.20m)
Lounge: 13'10 x 12'0 (4.22m x 3.66m)
Cloakroom

FIRST FLOOR

Landing
Bedroom 2: 13'10 x 11'7 (4.22m x 3.53m)
Bedroom 3: 10'9 x 7'1 (3.28m x 2.16m)
Family Bathroom

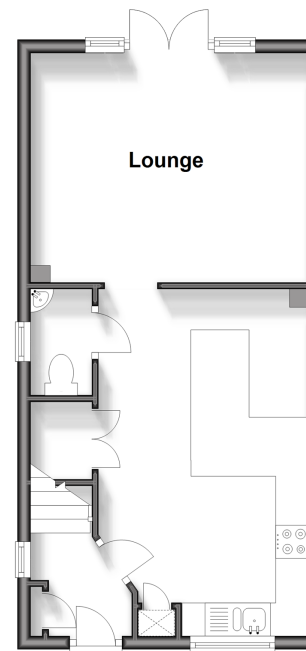
SECOND FLOOR

Bedroom 1: 21'9 x 13'8 (6.63m x 4.17m)
En-Suite Shower Room

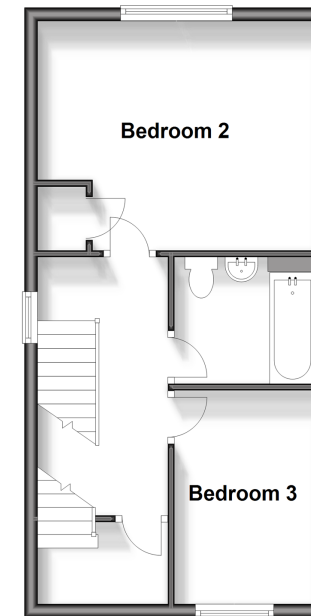
OUTSIDE

Rear Garden
Front Garden
Off Road Parking

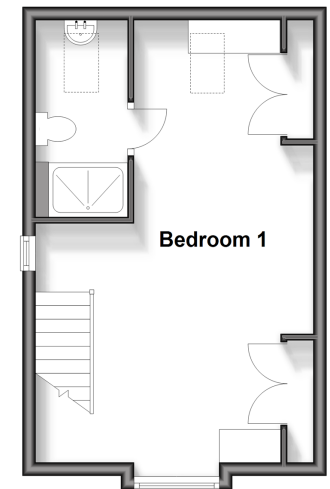
Ground Floor
Approx. 37.4 sq. metres (402.3 sq. feet)



First Floor
Approx. 37.4 sq. metres (402.3 sq. feet)



Second Floor
Approx. 28.6 sq. metres (308.1 sq. feet)



Call Epping - 01992 560600 ■ douglasallen.co.uk

- A private rental licensing scheme applies to some properties in this area, please contact us before proceeding
- Appliances & services are untested, dimensions are approximate and floor plans are not to scale

- Legal advice should be taken to verify fixtures/fittings, planning, alterations and/or lease details
- Through a Homewise Home For Life Plan people aged 60+ can secure this property for up to 59% less, by purchasing a Lifetime Lease.



51509032/20240420/KA/LL