



**Price**  
**£800,000**

**Freehold**

4x  1x  1x 

**High Road, North  
Weald, Essex, CM16**

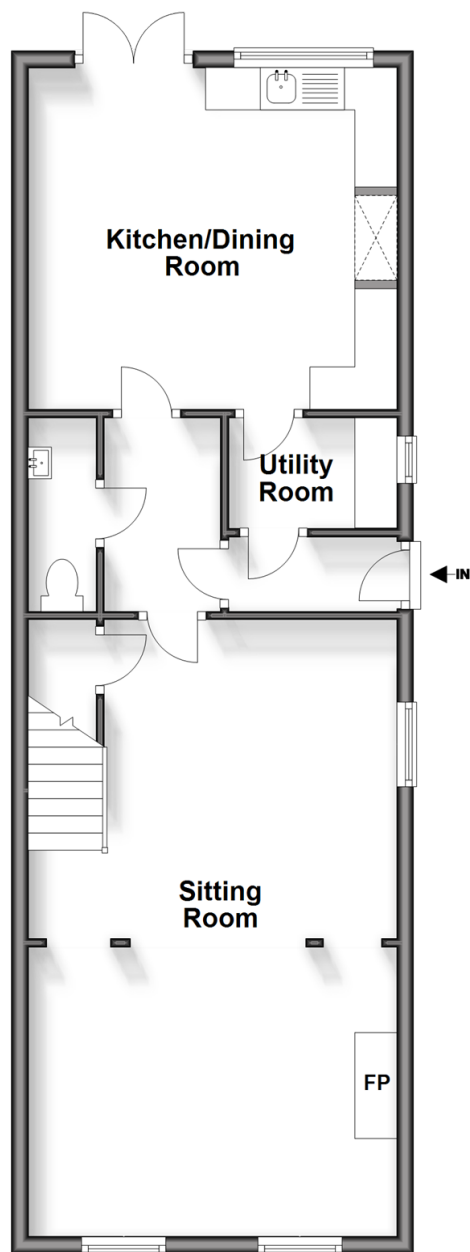
**OVER 60?**

Secure this property  
for up to **59% less!**

 **DOUGLAS  
ALLEN**  
Helping you move forwards

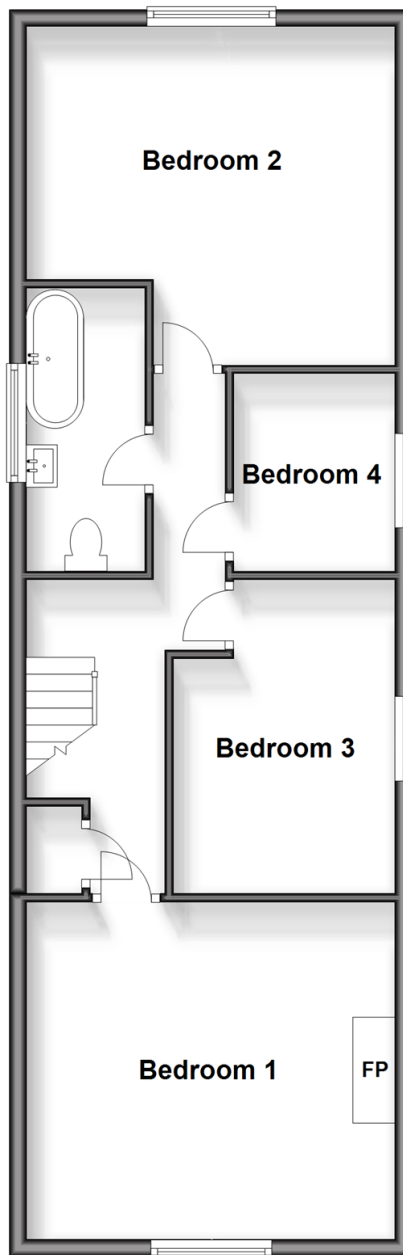
## Ground Floor

Approx. 60.5 sq. metres (651.5 sq. feet)



## First Floor

Approx. 62.8 sq. metres (676.2 sq. feet)



## Accommodation

### GROUND FLOOR

Entrance Hall

Utility Room: 6'7 x 4'3 (2.01m x 1.30m)

Inner Hall

Sitting Room: 23'9 x 14'4 (7.24m x 4.37m)

Kitchen/Dining Room: 14'5 x 13'3 (4.40m x 4.04m)

Cloakroom

### FIRST FLOOR

Landing

Bedroom 1: 14'5 x 13'1 (4.40m x 3.99m)

Bedroom 2: 14'5 x 13'2 (4.40m x 4.02m)

Bedroom 3: 12'2 x 8'8 (3.71m x 2.64m)

Bedroom 4: 7'8 x 6'4 (2.34m x 1.93m)

Family Bathroom

### OUTSIDE

Rear Garden

Front Garden

Off Road Parking





## Main features

- Extended detached house with large rear garden
- Excellent condition throughout
- Original features and character with working fire place
- Vaulted ceiling in bedroom 2 with views over the garden
- Off road parking for 2 cars
- Walking distance to local primary schools and village shops



### Nearest Schools

Primary Schools: St Andrew's CofE Primary 0.2 miles, Coopersale and Theydon Garnon C of E Voluntary Controlled Primary Sch 2.4 miles, The Henry Moore Primary 3.2 miles



### Transport Information

Underground Epping 3.5 miles, Theydon Bois 6.5 miles, Buckhurst Hill 8.2 miles

Train Stations: Harlow Mill 6.8 miles, Harlow Town 7.2 miles, Waltham Cross 8.6 miles



### Address

High Road, North Weald, Essex, CM16



### Directions

For directions to this property please contact us.





Call Epping Branch 01992 560600 ■ [douglasallen.co.uk](https://douglasallen.co.uk)



- A private rental licensing scheme applies to some properties in this area, please contact us before proceeding
- Appliances & services are untested, dimensions are approximate and floor plans are not to scale

- Legal advice should be taken to verify fixtures/fittings, planning, alterations and/or lease details
- Through a Homewise Home For Life Plan people aged 60+ can secure this property for up to 59% less, by purchasing a Lifetime Lease.



51509019/20240508/KA/LL