



**Price**

**£310,000**

**Leasehold**

2x  1x  1x 

**Woodland Grove,  
Epping, Essex, CM16**

**OVER 60?**

Secure this property  
for up to **59% less!**



**DOUGLAS  
ALLEN**

Helping you move forwards



## Main features

- Second floor apartment
- Allocated parking space plus visitors parking
- New storage heaters
- Short walk to Epping tube station
- Walking distance to the High Street
- Short drive to access the M11 and M25

## Accommodation

### SECOND FLOOR

Entrance Hall

Lounge/Diner: 16'3 x 10'11 (4.96m x 3.33m)

Kitchen: 10'3 x 6'3 (3.13m x 1.91m)

Bedroom 1: 13'6 x 9'2 (4.12m x 2.80m)

Bedroom 2: 8'3 x 7'6 (2.52m x 2.29m)

Bathroom

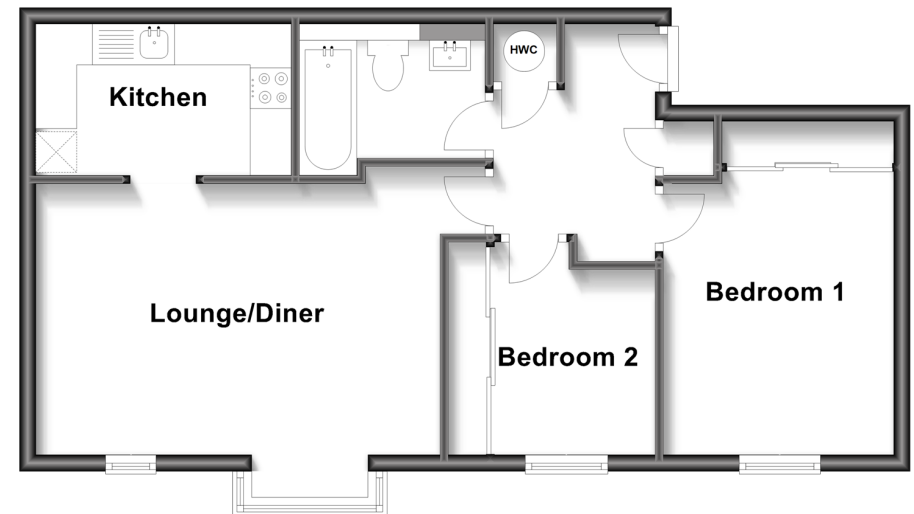
### OUTSIDE

Resident and Visitor Parking

Communal Gardens

### Second Floor

Approx. 52.1 sq. metres (561.1 sq. feet)



**Call Epping - 01992 560600 ■ [douglasallen.co.uk](http://douglasallen.co.uk)**

- A private rental licensing scheme applies to some properties in this area, please contact us before proceeding
- Appliances & services are untested, dimensions are approximate and floor plans are not to scale

- Legal advice should be taken to verify fixtures/fittings, planning, alterations and/or lease details
- Through a Homewise Home For Life Plan people aged 60+ can secure this property for up to 59% less, by purchasing a Lifetime Lease.