



**Price**

**£900,000**

**Freehold**

4x  3x  2x 

**Mill Street, Harlow,  
Essex, CM17**

**OVER 60?**

Secure this property  
for up to **59% less!**

 **DOUGLAS  
ALLEN**  
Helping you move forwards

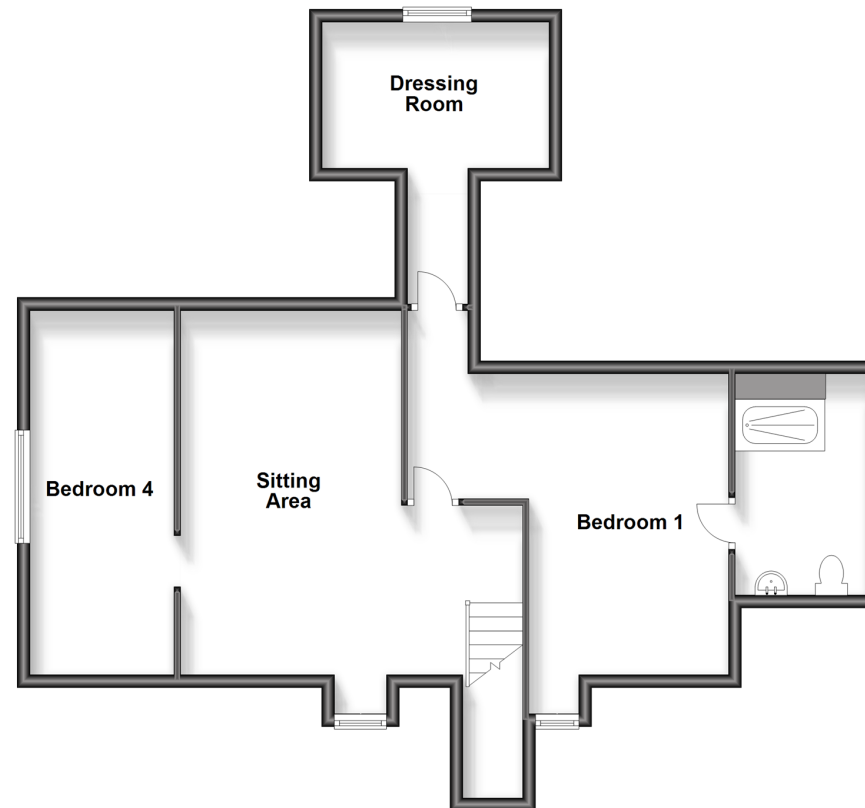
## Ground Floor

Approx. 141.0 sq. metres (1517.9 sq. feet)



## First Floor

Approx. 78.3 sq. metres (842.3 sq. feet)



## Accommodation

### GROUND FLOOR

Entrance Hall  
 Lounge: 17'3 x 12'9 (5.26m x 3.89m)  
 Dining Room: 17'4 x 10'0 (5.29m x 3.05m)  
 Kitchen: 14'5 x 13'6 (4.40m x 4.12m)  
 Breakfast Area : 14'5 x 9'8 (4.40m x 2.95m)  
 Utility Room: 22'8 x 5'7 (6.91m x 1.70m)  
 Bedroom 2: 15'7 x 13'9 (4.75m x 4.19m)  
 En-Suite Shower Room  
 Bedroom 3: 10'0 x 9'2 (3.05m x 2.80m)  
 Family Bathroom

### FIRST FLOOR

Landing  
 Bedroom 1: 16'6 x 15'3 (5.03m x 4.65m)  
 En-Suite Shower Room  
 Dressing Room  
 Sitting Area : 18'8 x 17'5 (5.69m x 5.31m)  
 Bedroom 4: 16'6 x 15'3 (5.03m x 4.65m)

### OUTSIDE

Detached Double Garage  
 Driveway Parking  
 Rear Garden  
 Front Garden





## Main features

- Stunning chalet style detached bungalow
- Main bedroom with en-suite shower and dressing room
- Double garage to the rear
- Gated driveway
- Secluded cul-De-sac location
- Easy access to the M11



### Nearest Schools

Primary Schools: The Henry Moore Primary 0.8 miles, Potter Street Primary 1.1 miles, Holy Cross Catholic Primary, Harlow 1.3 miles

Secondary Schools: Passmores Academy 1.2 miles, St



### Transport Information

Train Stations: Harlow Mill 2.8 miles, Harlow Town 3.1 miles, Roydon 5.1 miles  
Underground Epping 4.2 miles, Theydon Bois 5.8 miles, Debden 7.7 miles



### Address

Mill Street, Harlow, Essex, CM17



### Directions

For directions to this property please contact us.







Call Epping Branch 01992 560600 ■ [douglasallen.co.uk](https://douglasallen.co.uk)



- A private rental licensing scheme applies to some properties in this area, please contact us before proceeding
- Appliances & services are untested, dimensions are approximate and floor plans are not to scale

- Legal advice should be taken to verify fixtures/fittings, planning, alterations and/or lease details
- Through a Homewise Home For Life Plan people aged 60+ can secure this property for up to 59% less, by purchasing a Lifetime Lease.



51508959/20231104/KA/PJ