



OVER 60?

Secure this property
for up to **59% less!**

Price

£515,000

Freehold

3x  1x  3x 

**Green Close, Epping
Green, Epping Green,
Essex, CM16**

 **DOUGLAS
ALLEN**
Helping you move forwards



Main features

- Semi-detached house with off street parking
- Flexible family accommodation
- Excellent condition throughout
- Epping Upland C of E school catchment
- Popular village location

Accommodation

GROUND FLOOR

Entrance Hall

Lounge: 13'4 x 12'4 (4.07m x 3.76m)

Dining Area: 9'1 x 7'6 (2.77m x 2.29m)

Family Room: 16'6 x 7'11 (5.03m x 2.41m)

Kitchen: 10'7 x 7'4 (3.23m x 2.24m)

Cloakroom

FIRST FLOOR

Landing

Bedroom 1: 10'5 x 8'9 (3.18m x 2.67m)

Bedroom 2: 9'11 x 8'9 (3.02m x 2.67m)

Bedroom 3: 8'8 x 6'7 (2.64m x 2.01m)

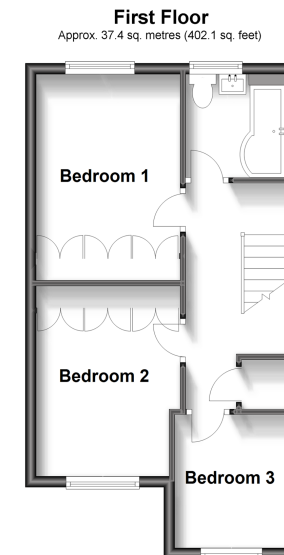
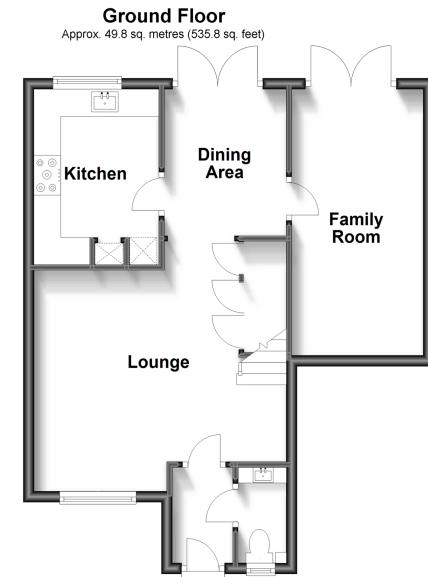
Family Bathroom

OUTSIDE

Rear Garden

Front Garden

Driveway Parking



Call Epping - 01992 560600 ■ douglasallen.co.uk

- A private rental licensing scheme applies to some properties in this area, please contact us before proceeding
- Legal advice should be taken to verify fixtures/fittings, planning, alterations and/or lease details
- Appliances & services are untested, dimensions are approximate and floor plans are not to scale
- Through a Homewise Home For Life Plan people aged 60+ can secure this property for up to 59% less, by purchasing a Lifetime Lease.



51508929/20230712/KA/LL