



Price

£400,000

Freehold

2x  1x  1x 

**Meadow View,
Murthering Lane,
Navestock, Romford,
Essex, RM4**



Main features

- Detached bungalow with large gardens
- Private driveway offering off road parking for several cars
- Situated within gated grounds with views over open farmland
- Overlooks a private fishing lake
- Large gardens
- Rural location
- Short drive to access major road links

Accommodation

GROUND FLOOR

Entrance Hall

Living Area: 33'9 x 14'2 (10.29m x 4.32m)

Bedroom 1: 16'5 x 13'11 (5.01m x 4.24m)

Bedroom 2: 14'6 x 12'8 (4.42m x 3.86m)

Shower Room

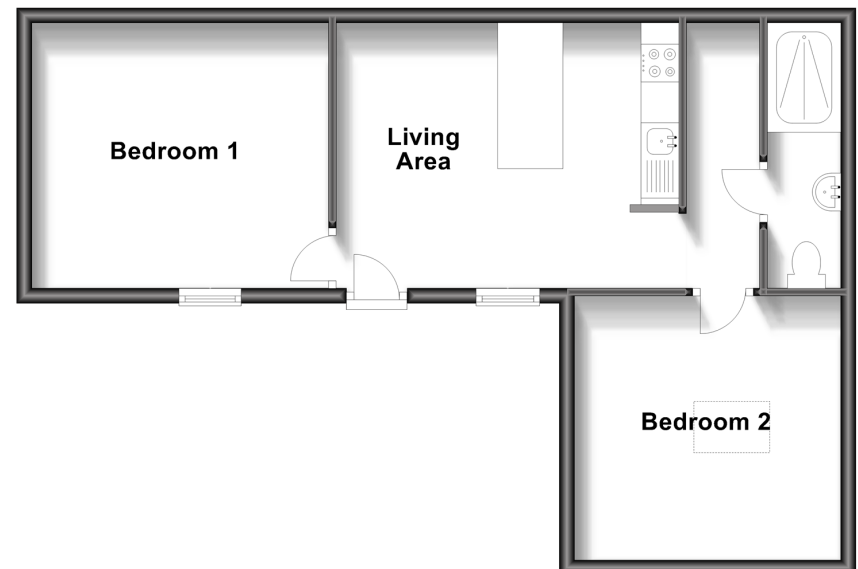
OUTSIDE

Front Garden

Off Road Parking

Ground Floor

Approx. 50.2 sq. metres (540.8 sq. feet)



Call Epping - 01992 560600 ■ douglasallen.co.uk

- A private rental licensing scheme applies to some properties in this area, please contact us before proceeding
- Legal advice should be taken to verify fixtures/fittings, planning, alterations and/or lease details

- If buying to let, the energy rating will need to be improved to at least 'E' rating before you can let the property
- Appliances & services are untested, dimensions are approximate and floor plans are not to scale



51508905/20240426/LL/LL