



Price
£800,000

Freehold

4x  2x  1x 

**Hill Hall Cottages,
Theydon mount, Epping,
Essex, CM16**

 **DOUGLAS
ALLEN**
Helping you move forwards



Main features

- Stunning terraced house
- Set within idyllic gated grounds with extensive gardens
- Beautifully presented throughout
- Amazing views across nearby countryside
- Private rear garden

Accommodation

GROUND FLOOR

Entrance Hall

Sitting Room: 17'7 x 10'11 (5.36m x 3.33m)

Kitchen/Diner: 15'9 x 13'10 (4.80m x 4.22m)

Utility Room: 6'4 x 5'2 (1.93m x 1.58m)

Conservatory: 11'11 x 11'4 (3.63m x 3.46m)

FIRST FLOOR

Bedroom 2: 11'8 x 10'8 (3.56m x 3.25m)

Bedroom 3: 11'0 x 9'3 (3.36m x 2.82m)

Bedroom 4: 7'11 x 7'11 (2.41m x 2.41m)

Family Bathroom

SECOND FLOOR

Bedroom 1: 21'10 x 14'4 (6.66m x 4.37m)

En suite

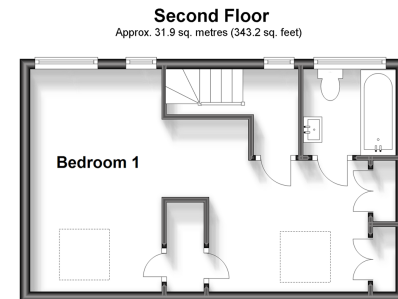
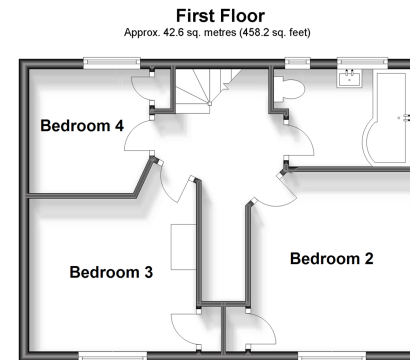
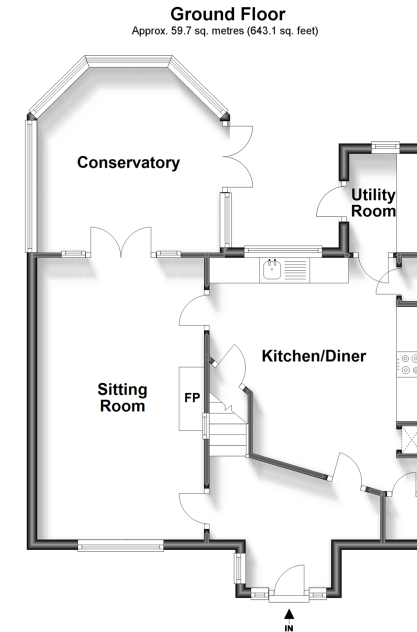
OUTSIDE

Rear Garden

Off Road Parking

Call Epping - 01992 560600 ■ douglasallen.co.uk

- A private rental licensing scheme applies to some properties in this area, please contact us before proceeding
- If buying to let, the energy rating will need to be improved to at least 'E' rating before you can let the property
- Legal advice should be taken to verify fixtures/fittings, planning, alterations and/or lease details
- Appliances & services are untested, dimensions are approximate and floor plans are not to scale



51508897/20230516/KA/PJ