



Price

£320,000

Leasehold

2x  1x  1x 

**Woodland Grove,
Epping, Essex, CM16**



Main features

- Second floor apartment
- Recently redecorated with new fitted carpets
- Communal Gardens
- Excellent Condition
- Lease renewed to 125 years
- No onward chain

Accommodation

SECOND FLOOR

Entrance Hallway

Lounge/Dining Room: 16'4 x 11'0 (4.98m x 3.36m)

Kitchen: 11'2 x 6'3 (3.41m x 1.91m)

Bedroom 1: 13'4 x 9'0 (4.07m x 2.75m)

Bedroom 2: 8'10 x 8'4 (2.69m x 2.54m)

Family Bathroom

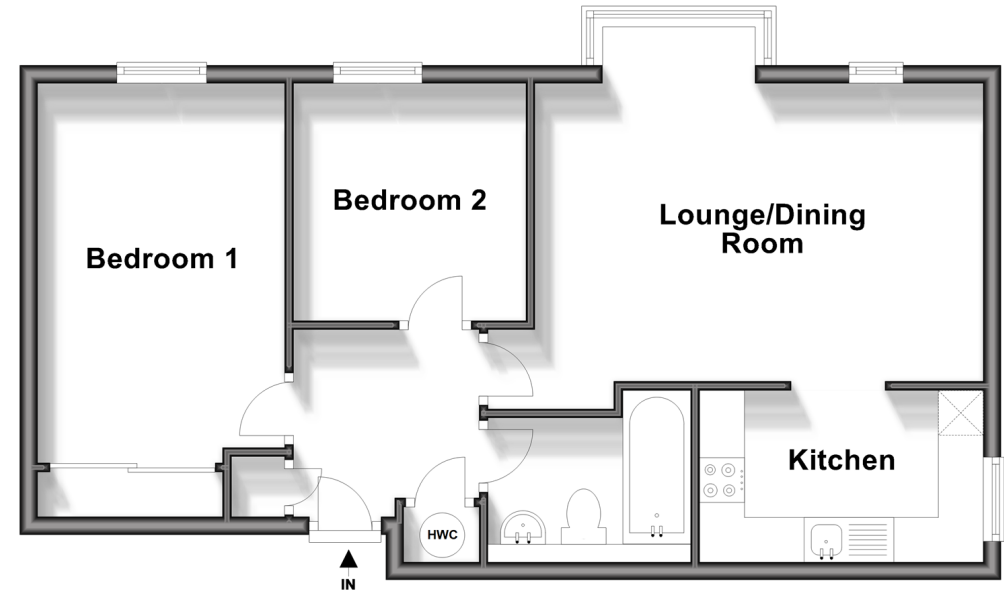
OUTSIDE

Communal Gardens

Allocated Parking

Second Floor

Approx. 55.0 sq. metres (591.7 sq. feet)



Call Epping - 01992 560600 ■ douglasallen.co.uk

■ A private rental licensing scheme applies to some properties in this area, please contact us before proceeding

■ Appliances & services are untested, dimensions are approximate and floor plans are not to scale

■ Legal advice should be taken to verify fixtures/fittings, planning, alterations and/or lease details



51508871/20240210/KA/LL