



Price

£735,000

Freehold

3x  3x  1x 

**Woodlands, Copthall
Green, Waltham Abbey,
Essex, EN9**

 **DOUGLAS
ALLEN**
Helping you move forwards



Main features

- A stunning home at Woodlands in Waltham Abbey
- Contemporary kitchen with stone worktops and integrated Blaupunkt appliances
- Energy saving underfloor heating to ground floor
- Allocated off-road parking and driveway access

Accommodation

GROUND FLOOR

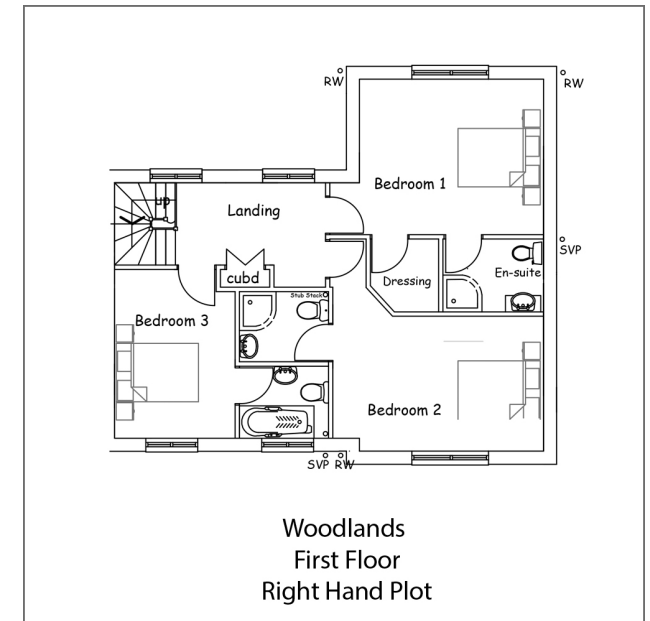
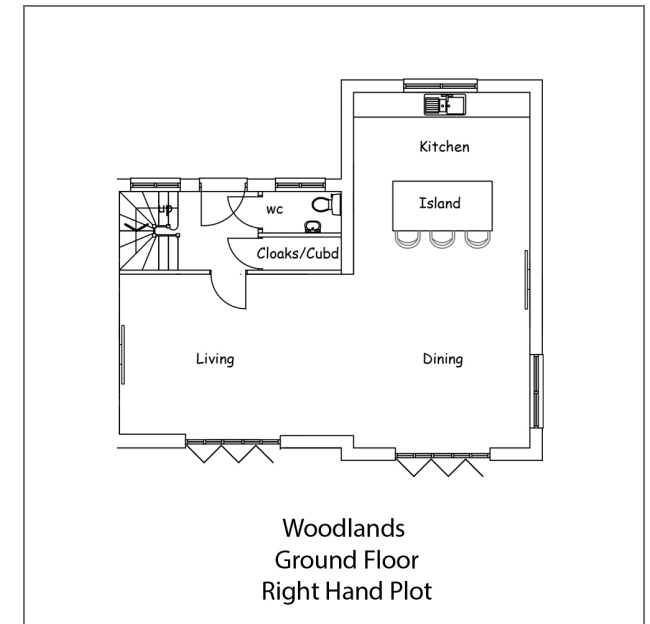
Entrance Hall
Cloakroom
Lounge: 18'6 x 12'8 (5.64m x 3.86m)
Kitchen/Diner: 28'2 x 13'10 (8.59m x 4.22m)

FIRST FLOOR

Landing
Bedroom 1: 13'10 x 11'8 (4.22m x 3.56m)
En-Suite Shower Room
Dressing Room
Bedroom 2: 15'10 x 10'2 (4.83m x 3.10m)
En-Suite Shower Room
Bedroom 3: 13'1 x 9'2 (3.99m x 2.80m)
En-Suite Bathroom

OUTSIDE

Rear Garden
Front Garden
Off-Road Parking



Call Epping - 01992 560600 ■ douglasallen.co.uk

- A private rental licensing scheme applies to some properties in this area, please contact us before proceeding
- If buying to let, the energy rating will need to be improved to at least 'E' rating before you can let the property
- Legal advice should be taken to verify fixtures/fittings, planning, alterations and/or lease details
- Appliances & services are untested, dimensions are approximate and floor plans are not to scale



51508864/20231213/LL/LB