



Price

£875,000

Freehold

4x  1x  2x 

**Dukes Avenue, Theydon
Bois, Epping, Essex,
CM16**

OVER 60?

Secure this property
for up to **59% less!**



Video Tour available



**DOUGLAS
ALLEN**

Helping you move forwards



Main features

- Semi-detached house in popular village
- Good size accommodation
- Potential to extend (subject to planning permission)
- Garage and off road parking
- Walking distance to the village shops and underground station
- Walking distance to Primary School

Accommodation

GROUND FLOOR

Entrance Hall

Sitting Room: 23'8 x 11'6 (7.22m x 3.51m)

Dining Room: 16'6 x 11'6 (5.03m x 3.51m)

Kitchen: 15'3 x 6'11 (4.65m x 2.11m)

Cloakroom

Bedroom 4: 8'6 x 6'11 (2.59m x 2.11m)

FIRST FLOOR

Landing

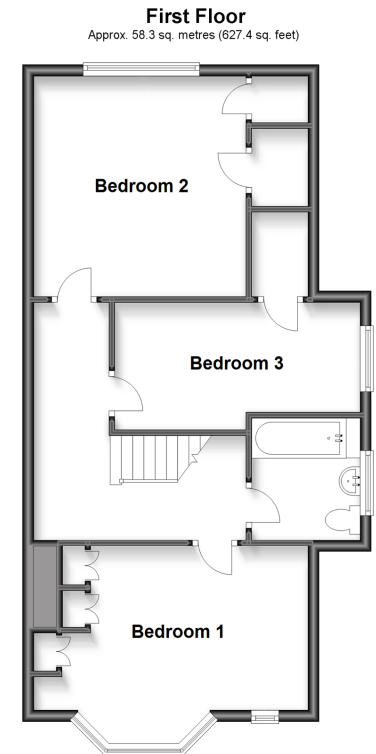
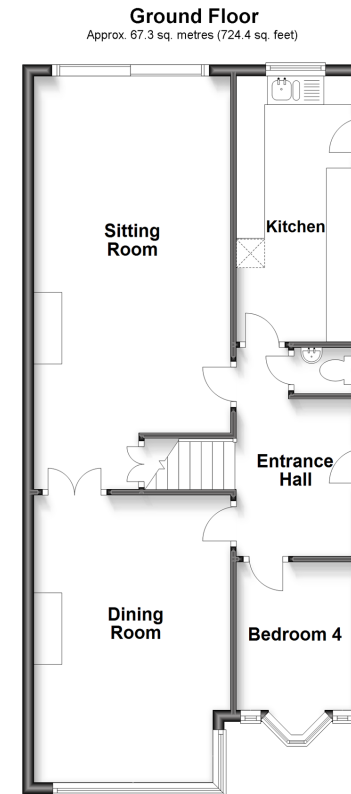
Bedroom 1: 16'0 x 9'5 (4.88m x 2.87m)

Bedroom 2: 12'8 x 12'5 (3.86m x 3.79m)

Bedroom 3: 14'4 x 7'4 (4.37m x 2.24m)

Garage & Off Road Parking

Front & Rear Garden



Call Epping - 01992 560600 ■ douglasallen.co.uk

- A private rental licensing scheme applies to some properties in this area, please contact us before proceeding
- Legal advice should be taken to verify fixtures/fittings, planning, alterations and/or lease details
- Appliances & services are untested, dimensions are approximate and floor plans are not to scale
- Through a Homewise Home For Life Plan people aged 60+ can secure this property for up to 59% less, by purchasing a Lifetime Lease.



51508759/20221223/KA/LB