



**Price**  
**£550,000**

**Freehold**

3x  2x  2x 

**Hastingwood Road,  
Hastingwood, Harlow,  
Essex, CM17**

**OVER 60?**

Secure this property  
for up to **59% less!**

 **DOUGLAS  
ALLEN**  
Helping you move forwards





## Main features

- Semi-detached house with en-suite to bedroom 1
- Refurbished throughout
- Good size rooms
- Large landscaped rear garden with patio area
- Off road parking for 2 cars
- New oil fired central heating

## Accommodation

### GROUND FLOOR

Enclosed Entrance

Hall

Lounge: 17'6 x 11'9 (5.34m x 3.58m)

Dining Area: 13'2 x 9'0 (4.02m x 2.75m)

Kitchen/Breakfast Area: 19'6 x 7'11 (5.95m x 2.41m)

Cloakroom

### FIRST FLOOR

Landing

Bedroom 1: 17'7 x 12'2 (5.36m x 3.71m)

En-Suite Shower Room

Bedroom 2: 13'3 x 8'9 (4.04m x 2.67m)

Bedroom 3: 10'0 x 8'2 (3.05m x 2.49m)

Family Bathroom

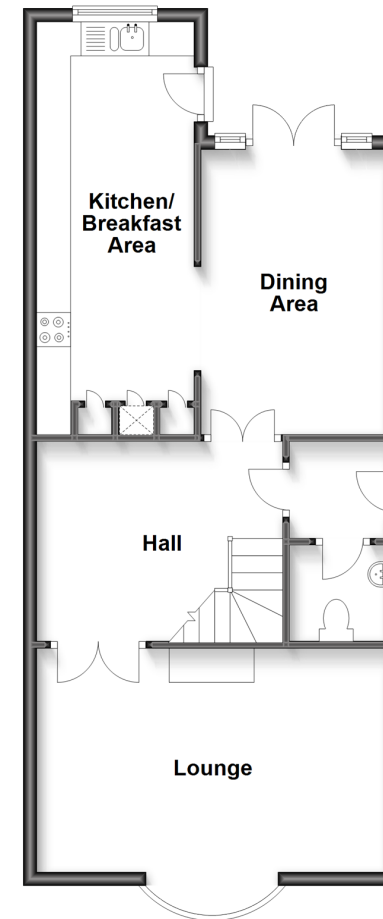
### OUTSIDE

Rear Garden

Off Road Parking

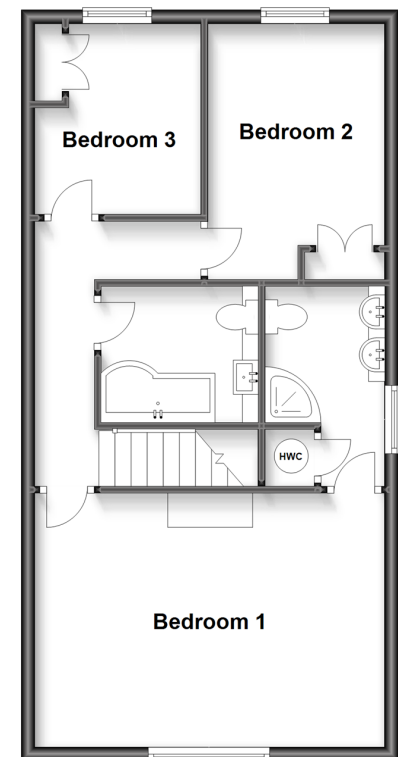
### Ground Floor

Approx. 59.4 sq. metres (639.2 sq. feet)



### First Floor

Approx. 54.7 sq. metres (589.2 sq. feet)



**Call Epping - 01992 560600 ■ [douglasallen.co.uk](http://douglasallen.co.uk)**

- A private rental licensing scheme applies to some properties in this area, please contact us before proceeding
- Legal advice should be taken to verify fixtures/fittings, planning, alterations and/or lease details
- Appliances & services are untested, dimensions are approximate and floor plans are not to scale
- Through a Homewise Home For Life Plan people aged 60+ can secure this property for up to 59% less, by purchasing a Lifetime Lease.



51508751/20230110/iw/LB