



OVER 60?

Secure this property
for up to **59% less!**

Price

£320,000

Leasehold

2x  1x  1x 

**Woodland Grove,
Epping, Essex, CM16**

 **DOUGLAS
ALLEN**
Helping you move forwards



Main features

- Second floor flat
- Within walking distance to the High Street
- Communal gardens
- Private parking
- Long lease
- Popular location for access to Epping station

Accommodation

SECOND FLOOR

Entrance Hall

Lounge/Diner: 16'3 x 11'6 (4.96m x 3.51m)

Kitchen: 10'4 x 6'10 (3.15m x 2.08m)

Bedroom 1: 13'2 x 9'0 (4.02m x 2.75m)

Bedroom 2: 8'3 x 8'3 (2.52m x 2.52m)

Family Bathroom

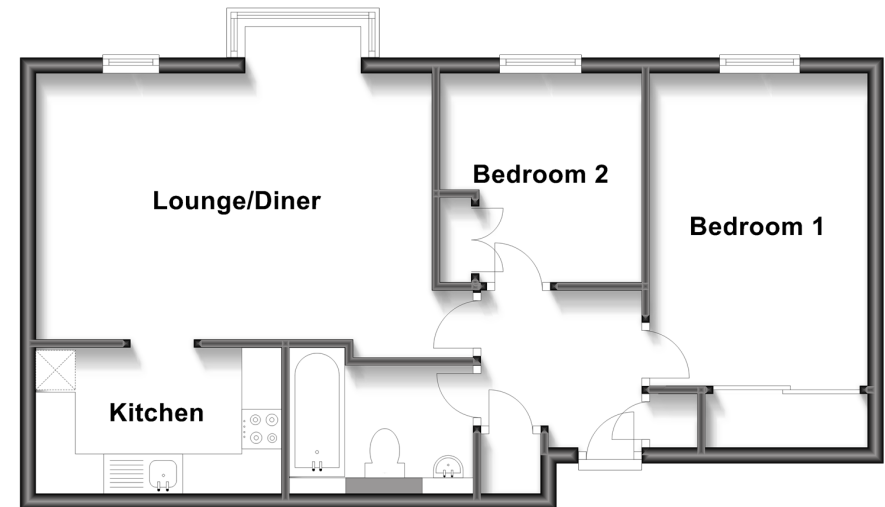
OUTSIDE

Residents Parking

Communal Gardens

Second Floor

Approx. 53.8 sq. metres (578.6 sq. feet)



Call Epping - 01992 560600 ■ douglasallen.co.uk

- A private rental licensing scheme applies to some properties in this area, please contact us before proceeding
- Appliances & services are untested, dimensions are approximate and floor plans are not to scale

- Legal advice should be taken to verify fixtures/fittings, planning, alterations and/or lease details
- Through a Homewise Home For Life Plan people aged 60+ can secure this property for up to 59% less, by purchasing a Lifetime Lease.