



**Price**

**£1,000,000**

**Freehold**

1x  1x  1x 

**Mount End, Theydon  
Mount, Epping, Essex,  
CM16**

**OVER 60?**

Secure this property  
for up to **59% less!**



Video Tour available



**DOUGLAS  
ALLEN**

Helping you move forwards



## Main features

- Detached house with woodland views
- Extensive grounds
- Just under 2.5 miles to Epping
- Possible option for stables (subject to planning permission)
- Plenty of off road parking
- Newly refurbished

## Accommodation

### GROUND FLOOR

Lounge/Kitchen/Diner: 27'6 x 19'0 maximum (8.39m x 5.80m)

Utility Room: 12'10 x 4'4 (3.91m x 1.32m)

Cloakroom

Bedroom: 13'3 x 12'11 (4.04m x 3.94m)

Loft Space: 39'8 x 28'5 (12.10m x 8.67m)

### OUTSIDE

Roof Terrace

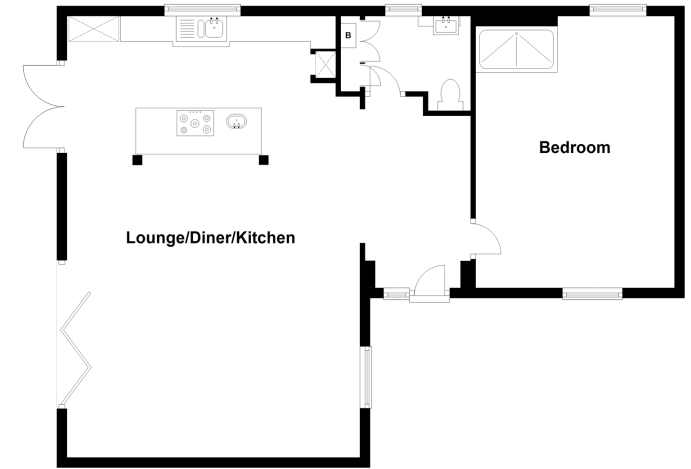
Wrap Around Garden

Off Road Parking

**Call Epping - 01992 560600 ■ [douglasallen.co.uk](http://douglasallen.co.uk)**

- A private rental licensing scheme applies to some properties in this area, please contact us before proceeding
- If buying to let, the energy rating will need to be improved to at least 'E' rating before you can let the property
- Legal advice should be taken to verify fixtures/fittings, planning, alterations and/or lease details
- Appliances & services are untested, dimensions are approximate and floor plans are not to scale
- Through a Homewise Home For Life Plan people aged 60+ can secure this property for up to 59% less, by purchasing a Lifetime Lease.

**Ground Floor**  
Approx. 84.0 sq. metres (904.3 sq. feet)



**First Floor**  
Approx. 0.0 sq. metres (0.0 sq. feet)

