



Price

£350,000

Leasehold

2x  1x  1x 

**High Street, Epping,
Essex, CM16**

OVER 60?

Secure this property
for up to **59% less!**

 **DOUGLAS
ALLEN**
Helping you move forwards



Main features

- First floor apartment
- Newly renovated
- Centrally located on the High Street
- Easy access to both the M11 and M25
- No onward chain
- Mortgage sources may be restricted.
Please seek independent advice
before proceeding

Accommodation

FIRST FLOOR

Lounge/Diner: 20'5 x 11'2 (6.23m x 3.41m)

Kitchen: 7'3 x 6'3 (2.21m x 1.91m)

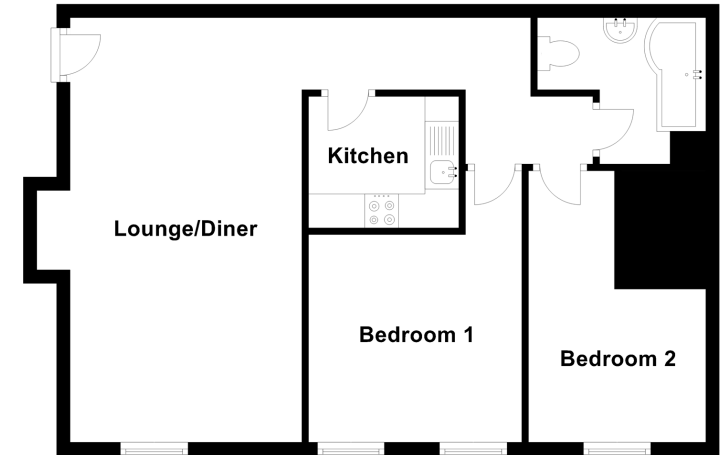
Bedroom 1: 10'9 maximum x 9'3 (3.28m x 2.82m)

Bedroom 2: 12'5 maximum x 8'5 (3.79m x 2.57m)

Bathroom

First Floor

Approx. 59.5 sq. metres (640.3 sq. feet)



Call Epping - 01992 560600 ■ douglasallen.co.uk

- A private rental licensing scheme applies to some properties in this area, please contact us before proceeding
- Legal advice should be taken to verify fixtures/fittings, planning, alterations and/or lease details
- Appliances & services are untested, dimensions are approximate and floor plans are not to scale
- Through a Homewise Home For Life Plan people aged 60+ can secure this property for up to 59% less, by purchasing a Lifetime Lease.



51508533/20230623/LL/LB