



Price
£500,000

Leasehold

2x  2x  1x 

**Theydon Bower, Epping,
Essex, CM16**

OVER 60?

Secure this property
for up to **59% less!**

 **DOUGLAS
ALLEN**
Helping you move forwards



Main features

- Ground floor apartment
- Two good sized bathrooms
- Situated within beautifully landscaped gardens
- Secure underground parking for 2 cars
- Walking distance to Epping shopping facilities and Epping Central Line Station

Accommodation

GROUND FLOOR

Entrance Hall

Lounge: 21'8 x 20'10 (6.61m x 6.35m)

Kitchen: 11'0 x 8'1 (3.36m x 2.47m)

Bedroom 1: 15'1 x 11'8 (4.60m x 3.56m)

En-Suite Shower Room

Bedroom 2: 11'8 x 7'11 (3.56m x 2.41m)

Family Bathroom

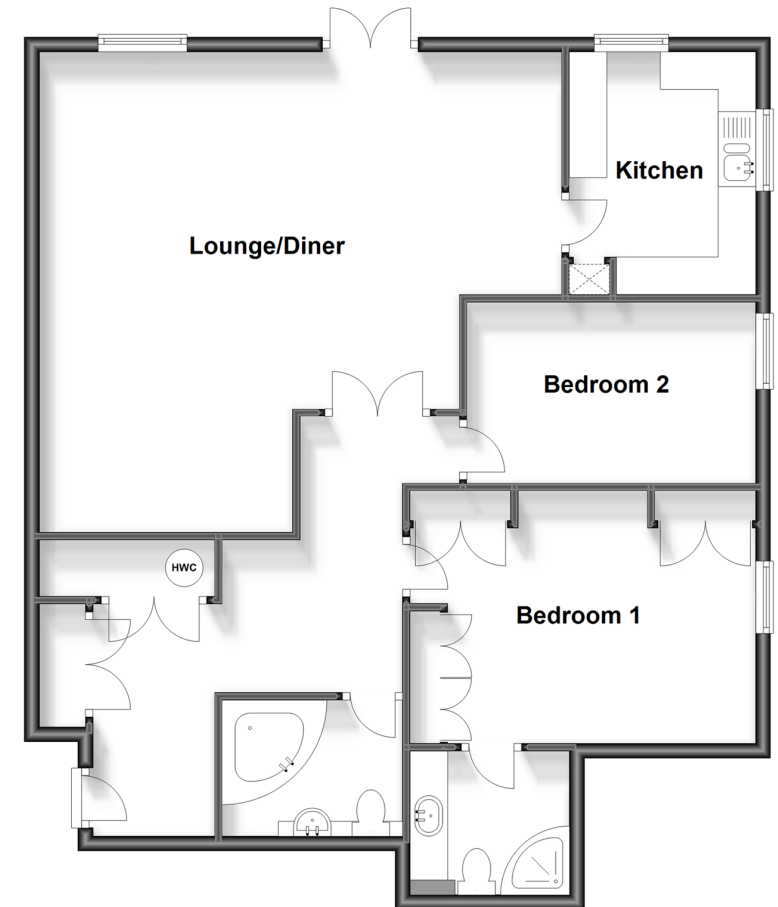
OUTSIDE

Communal Gardens

Allocated underground parking

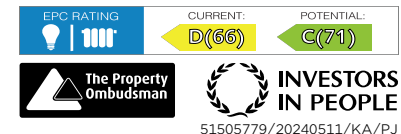
Ground Floor

Approx. 97.3 sq. metres (1047.0 sq. feet)



Call Epping - 01992 560600 ■ douglasallen.co.uk

- A private rental licensing scheme applies to some properties in this area, please contact us before proceeding
- Legal advice should be taken to verify fixtures/fittings, planning, alterations and/or lease details
- Appliances & services are untested, dimensions are approximate and floor plans are not to scale
- Through a Homewise Home For Life Plan people aged 60+ can secure this property for up to 59% less, by purchasing a Lifetime Lease.



51505779/20240511/KA/PJ