



OVER 60?

Secure this property
for up to **59% less!**

Price

£375,000

Freehold

2x  1x  1x 

**Bowyer Close, London,
E6**

 **DOUGLAS
ALLEN**
Helping you move forwards



Main features

- Well proportioned end of terrace house with off street parking
- First floor family bathroom
- Rear garden, ideal for outdoor entertaining
- Train & bus links to Stratford & the City
- Close to schools & places of worship

Accommodation

GROUND FLOOR

Entrance Hall

Living Room: 13'1 x 11'0 (3.99m x 3.36m)

Kitchen: 11'2 x 6'6 (3.41m x 1.98m)

FIRST FLOOR

Landing

Bedroom 1: 14'8 x 6'6 (4.47m x 1.98m)

Bedroom 2: 12'8 x 8'4 (3.86m x 2.54m)

Bathroom

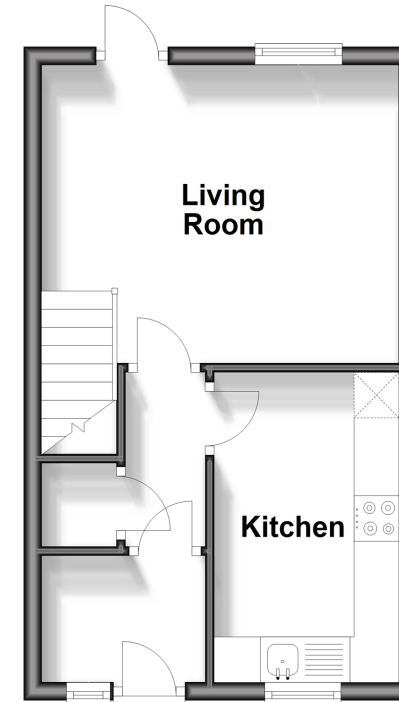
OUTSIDE

Rear Garden

Off Street Parking

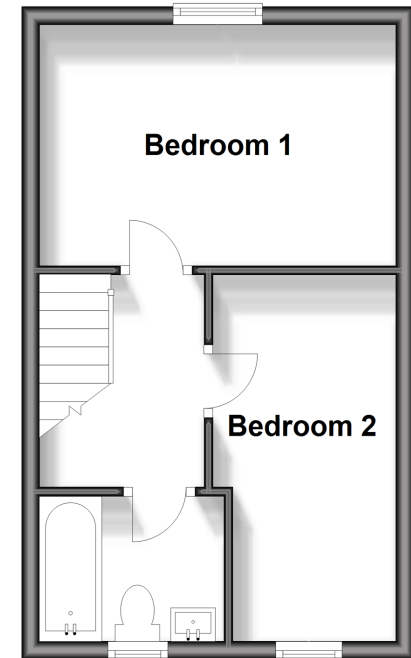
Ground Floor

Approx. 27.1 sq. metres (291.6 sq. feet)



First Floor

Approx. 27.1 sq. metres (291.6 sq. feet)



Call East Ham - 020 8472 8140 ■ douglasallen.co.uk

- A private rental licensing scheme applies to some properties in this area, please contact us before proceeding
- Legal advice should be taken to verify fixtures/fittings, planning, alterations and/or lease details
- Appliances & services are untested, dimensions are approximate and floor plans are not to scale
- Through a Homewise Home For Life Plan people aged 60+ can secure this property for up to 59% less, by purchasing a Lifetime Lease.



51315349/20240417/NK/NK