



OVER 60?

Secure this property
for up to **59% less!**

Price

£525,000

Freehold

3x  1x  2x 

**Mitcham Road, London,
E6**

 **DOUGLAS
ALLEN**
Helping you move forwards



Main features

- Beautifully presented terraced house
- Ground floor bathroom & separate toilet
- Modern fitted kitchen overlooking the well maintained rear garden
- Close to local Primary & Secondary schools
- Walking distance to Central Park

Accommodation

GROUND FLOOR

Entrance Hall

Lounge: 10'9 x 10'8 (3.28m x 3.25m)

Dining Area: 13'2 x 10'9 (4.02m x 3.28m)

Kitchen: 13'1 x 8'4 (3.99m x 2.54m)

Separate Toilet

Bathroom

SPLIT-LEVEL FIRST FLOOR

Landing

Bedroom 1: 13'8 x 10'9 (4.17m x 3.28m)

Bedroom 2: 11'0 x 8'7 (3.36m x 2.62m)

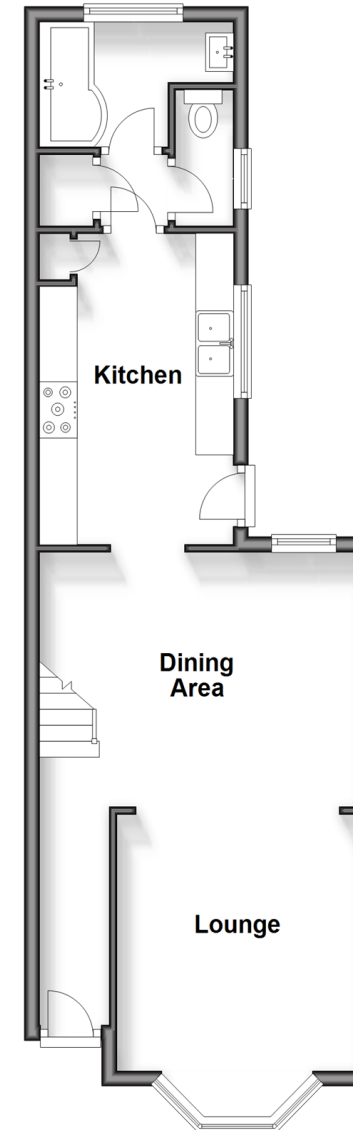
Bedroom 3: 13'1 x 8'6 (3.99m x 2.59m)

OUTSIDE

Front and Rear Garden

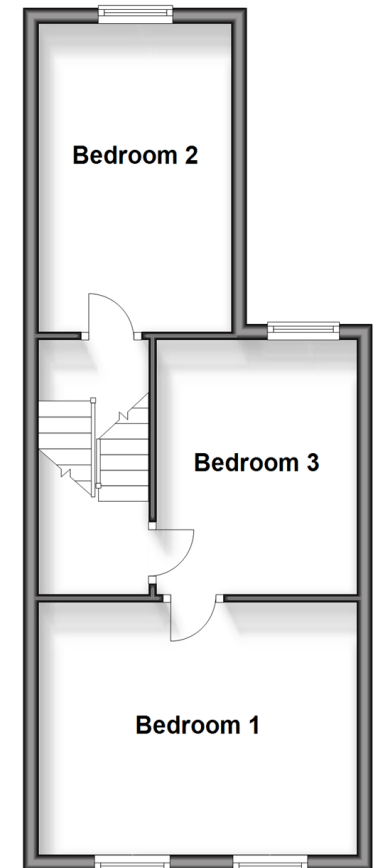
Ground Floor

Approx. 45.7 sq. metres (491.9 sq. feet)



Split Level First Floor

Approx. 38.7 sq. metres (416.5 sq. feet)



Call East Ham - 020 8472 8140 ■ douglasallen.co.uk

- A private rental licensing scheme applies to some properties in this area, please contact us before proceeding
- Legal advice should be taken to verify fixtures/fittings, planning, alterations and/or lease details
- Appliances & services are untested, dimensions are approximate and floor plans are not to scale
- Through a Homewise Home For Life Plan people aged 60+ can secure this property for up to 59% less, by purchasing a Lifetime Lease.



51315348/20240427/CN/NK