



**Price**

**£350,000**

**Leasehold**

1x  1x  1x 

**Galley House, Atlanis  
Avenue, London, E16**



## Main features

- Immaculate apartment with underfloor heating
- Open plan living with modern fitted kitchen/dining area
- Spacious balcony with views overlooking the communal gardens
- Perfect for first time buyers or buy-to-let investors

## Accommodation

### SECOND FLOOR

Entrance Hall

Lounge/Kitchen/Dining Room: 22'10 x 16'2 (6.96m x 4.93m)

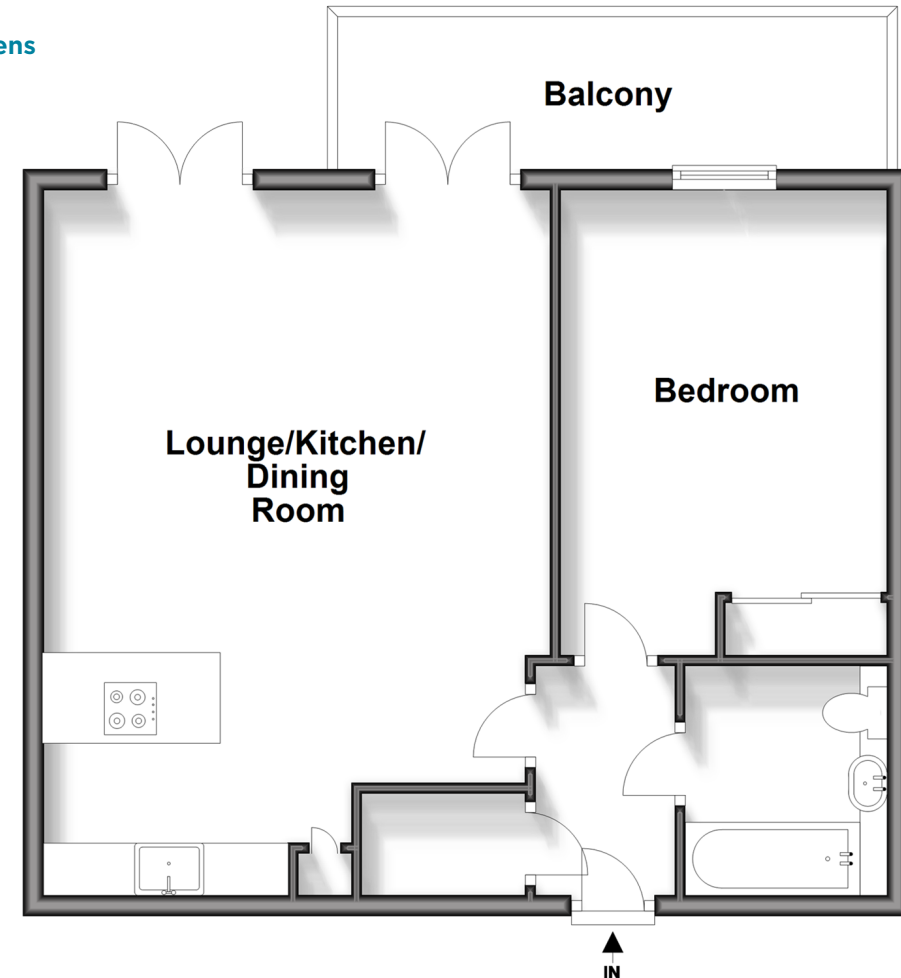
Bedroom : 15'9 x 10'4 (4.80m x 3.15m)

Bathroom

Balcony

## Second Floor

Approx. 54.9 sq. metres (590.6 sq. feet)



**Call East Ham - 020 8472 8140 ■ [douglasallen.co.uk](http://douglasallen.co.uk)**

- A private rental licensing scheme applies to some properties in this area, please contact us before proceeding
- Legal advice should be taken to verify fixtures/fittings, planning, alterations and/or lease details
- Appliances & services are untested, dimensions are approximate and floor plans are not to scale



51315303/20240412/CN/NK