

Price

£450,000

Freehold

3x  1x  2x 

**Gillman Drive, London,
E15**

OVER 60?

Secure this property
for up to **59% less!**

 **DOUGLAS
ALLEN**
Helping you move forwards



Main features

- This semi-detached house sits within the popular Newham Borough
- Spacious rear garden, ideal for outdoor entertaining
- Walking distance to local schools & places of worship
- Potential to extend (subject to planning)
- Bus & road links to Plaistow & Stratford stations

Accommodation

GROUND FLOOR

Entrance Porch
Entrance Hall
Lounge: 12'6 x 11'1 (3.81m x 3.38m)
Dining Room: 11'4 x 8'2 (3.46m x 2.49m)
Kitchen: 9'9 x 9'7 (2.97m x 2.92m)

FIRST FLOOR

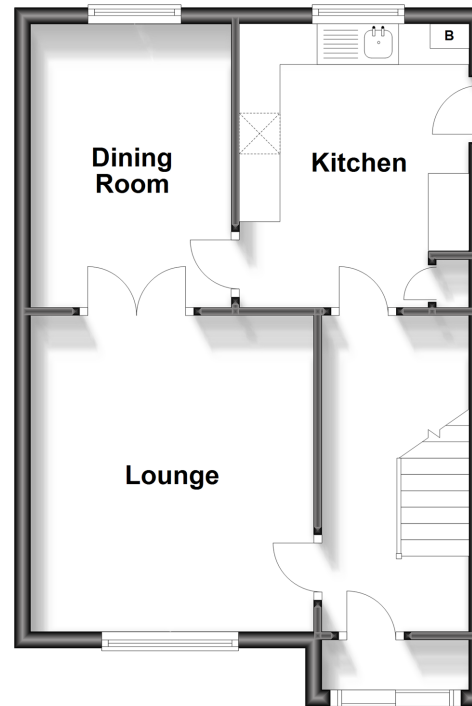
Landing
Bedroom 1: 12'6 x 11'2 (3.81m x 3.41m)
Bedroom 2: 11'1 x 9'10 (3.38m x 3.00m)
Bedroom 3: 7'9 x 7'2 (2.36m x 2.19m)
Bathroom
Separate Toilet

OUTSIDE

Front and Rear Garden

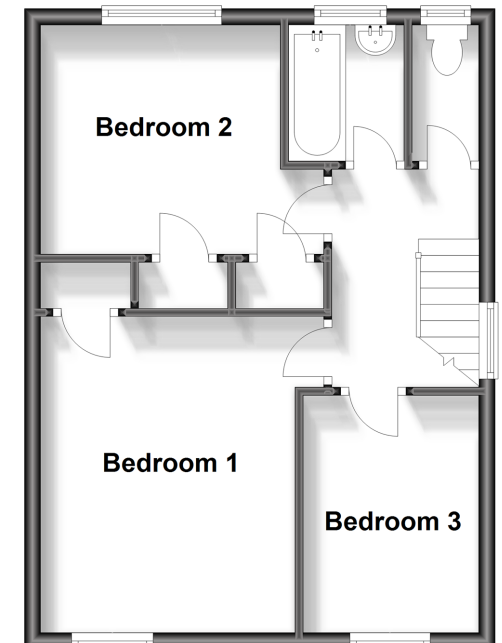
Ground Floor

Approx. 41.3 sq. metres (444.8 sq. feet)



First Floor

Approx. 40.0 sq. metres (431.0 sq. feet)



Call East Ham - 020 8472 8140 ■ douglasallen.co.uk

- A private rental licensing scheme applies to some properties in this area, please contact us before proceeding
- Appliances & services are untested, dimensions are approximate and floor plans are not to scale

- Legal advice should be taken to verify fixtures/fittings, planning, alterations and/or lease details
- Through a Homewise Home For Life Plan people aged 60+ can secure this property for up to 59% less, by purchasing a Lifetime Lease.