



Price

£230,000

Leasehold

1x  1x  1x 

Parr Road, London, E6

OVER 60?

Secure this property
for up to **59% less!**

 **DOUGLAS
ALLEN**
Helping you move forwards



Main features

- Well maintained second floor purpose built flat
- Own private balcony for additional outdoor space
- Good bus & road links to Upton Park Station
- Bright and spacious throughout
- Long Lease

Accommodation

SECOND FLOOR

Entrance Hall

Lounge/Dining Room: 16'8 x 10'7
(5.08m x 3.23m)

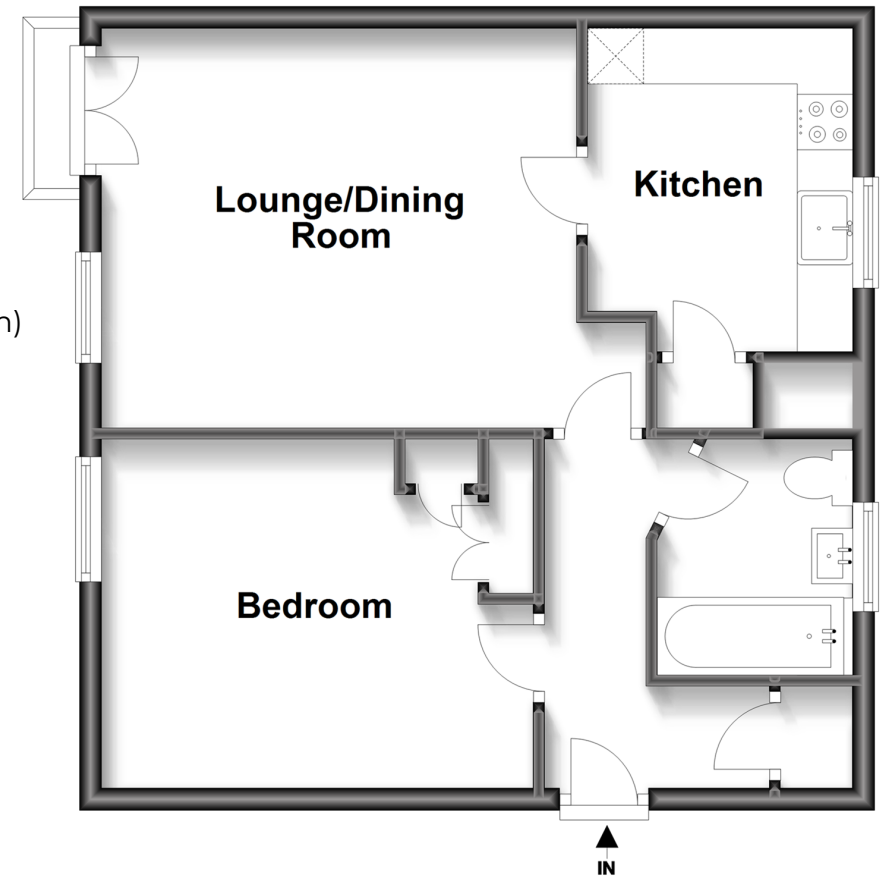
Kitchen: 10'7 x 9'0 (3.23m x 2.75m)

Bedroom : 13'10 x 9'11 (4.22m x 3.02m)

Bathroom

Second Floor

Approx. 46.3 sq. metres (498.3 sq. feet)



Call East Ham - 020 8472 8140 ■ douglasallen.co.uk

- A private rental licensing scheme applies to some properties in this area, please contact us before proceeding
- Legal advice should be taken to verify fixtures/fittings, planning, alterations and/or lease details
- Appliances & services are untested, dimensions are approximate and floor plans are not to scale
- Through a Homewise Home For Life Plan people aged 60+ can secure this property for up to 59% less, by purchasing a Lifetime Lease.

