



**Price**  
**£290,000**

**Leasehold**

1x  1x  1x 

**Bridgepoint Lofts,  
Shaftesbury Road,  
London, E7**

**OVER 60?**

Secure this property  
for up to **59% less!**

 **DOUGLAS  
ALLEN**  
Helping you move forwards





## Main features

- Well maintained fourth floor loft apartment
- Close to local amenities & local transport
- Accessible to East Ham station
- No onward chain
- A wonderful opportunity for a first time buyer

## Accommodation

### FOURTH FLOOR

Lounge/Kitchen/Dining Area: 25'11 x 14'8 (7.90m x 4.47m)

Bathroom

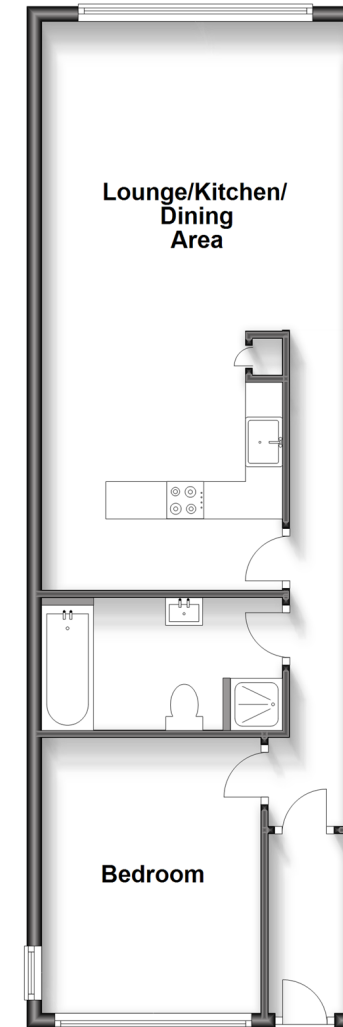
Bedroom : 11'4 x 9'8 (3.46m x 2.95m)

### OUTSIDE

Communal Gardens

### Fourth Floor

Approx. 54.5 sq. metres (586.3 sq. feet)



**Call East Ham - 020 8472 8140 ■ [douglasallen.co.uk](http://douglasallen.co.uk)**

- A private rental licensing scheme applies to some properties in this area, please contact us before proceeding
- Legal advice should be taken to verify fixtures/fittings, planning, alterations and/or lease details
- Appliances & services are untested, dimensions are approximate and floor plans are not to scale
- Through a Homewise Home For Life Plan people aged 60+ can secure this property for up to 59% less, by purchasing a Lifetime Lease.



51315122/20231129/CN/MG4