



**OVER 60?**

Secure this property  
for up to **59% less!**

**Price**  
**£450,000**

**Freehold**

3x  1x  2x 

**Alexandra Road, East  
Ham, E6**

 **DOUGLAS  
ALLEN**  
Helping you move forwards





## Main features

- 3 bedroom mid terrace house
- Quiet residential turning
- Perfect for first time buyers
- Central Park in the vicinity ideal for picnics in the summer
- No onward chain

## Accommodation

### GROUND FLOOR

Entrance Hall

Lounge/Dining Area: 23'8 x 11'7 (7.22m x 3.53m)

Kitchen: 11'7 x 10'9 (3.53m x 3.28m)

Bathroom

### FIRST FLOOR

Landing

Bedroom 1: 13'7 x 11'0 (4.14m x 3.36m)

Bedroom 2: 11'1 x 8'9 (3.38m x 2.67m)

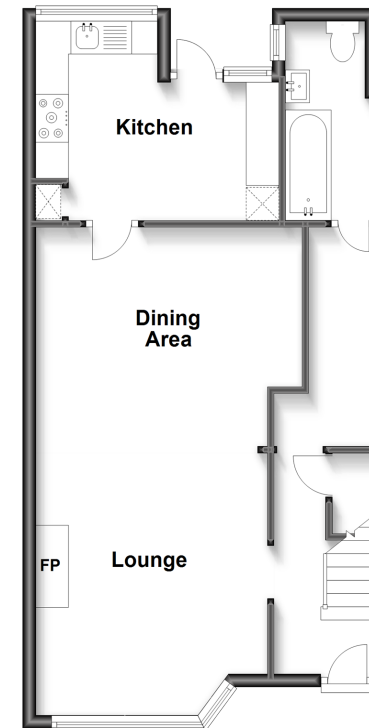
Bedroom 3: 8'1 x 7'9 (2.47m x 2.36m)

### OUTSIDE

Front and Rear Garden

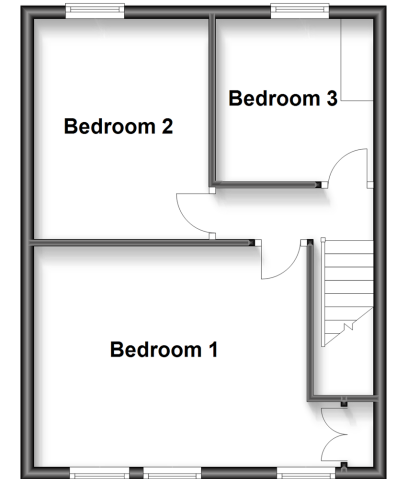
### Ground Floor

Approx. 51.4 sq. metres (553.2 sq. feet)



### First Floor

Approx. 35.5 sq. metres (382.1 sq. feet)



**Call East Ham - 020 8472 8140 ■ [douglasallen.co.uk](http://douglasallen.co.uk)**

- A private rental licensing scheme applies to some properties in this area, please contact us before proceeding
- Legal advice should be taken to verify fixtures/fittings, planning, alterations and/or lease details
- Appliances & services are untested, dimensions are approximate and floor plans are not to scale
- Through a Homewise Home For Life Plan people aged 60+ can secure this property for up to 59% less, by purchasing a Lifetime Lease.



51314970/20230502/MG4/MG4