



OVER 60?

You could get up to
59% off the price!*

Price
£375,000

Freehold

2x  1x  1x 

**Becket Avenue, London,
E6**

 **DOUGLAS
ALLEN**
Helping you move forwards



Main features

- 2 bedroom mid terraced house
- An ideal first time purchase
- Ready for you to create your dream home
- Local schools, transport and shops in the vicinity
- Located on a popular residential turning near Central Park

Accommodation

GROUND FLOOR

Entrance Hall

Lounge: 17'0 13 x 13'6 (5.19m x 4.12m)

Dining Area: 11'2 x 11'1 (3.41m x 3.38m)

Kitchen: 11'0 x 5'5 (3.36m x 1.65m)

FIRST FLOOR

Landing

Bedroom 1: 13'9 x 11'1 (4.19m x 3.38m)

Bedroom 2: 10'8 x 8'0 (3.25m x 2.44m)

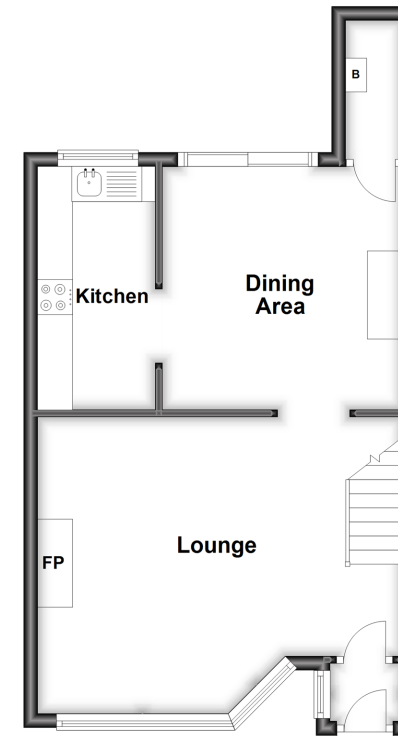
Bathroom

OUTSIDE

Rear Garden

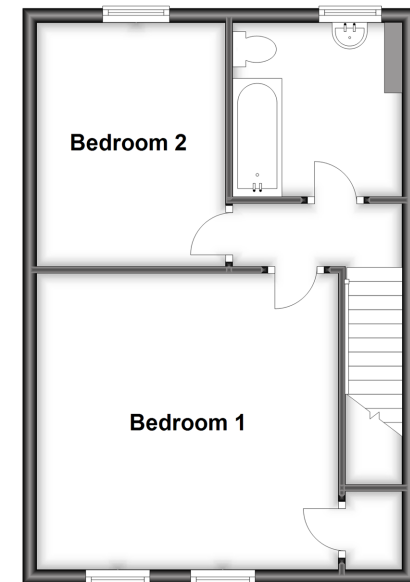
Ground Floor

Approx. 41.4 sq. metres (445.5 sq. feet)



First Floor

Approx. 40.5 sq. metres (435.5 sq. feet)



Call East Ham - 020 8472 8140 ■ douglasallen.co.uk

- A private rental licensing scheme applies to some properties in this area, please contact us before proceeding
- Legal advice should be taken to verify fixtures/fittings, planning, alterations and/or lease details
- Appliances & services are untested, dimensions are approximate and floor plans are not to scale
- Our Homewise partnership offer a 'Home for Life' plan to buyers over 60, granting a lifetime lease for your protection and reducing the purchase price by up to 59%



51314414/20220622/JS1/MG4