



**OVER 60?**

Secure this property  
for up to **59% less!**

**Price**

**£255,000**

**Leasehold**

2x  1x  1x 

**Massey Court, Florence  
Road, London, E6**

 **DOUGLAS  
ALLEN**  
Helping you move forwards



## Main features

- 2 bed first floor purpose built flat
- Located within access to Upton Park Underground
- Situated near The High Street with local shops and amenities
- An ideal home for first time buyers or an investor

## Accommodation

### FIRST FLOOR

Hallway

Lounge/Diner: 14'6 x 12'8 (4.42m x 3.86m)

Kitchen: 11'0 x 7'5 (3.36m x 2.26m)

Bedroom 1: 12'9 x 10'2 (3.89m x 3.10m)

Bedroom 2: 11'0 x 9'9 (3.36m x 2.97m)

Bathroom

Separate Toilet

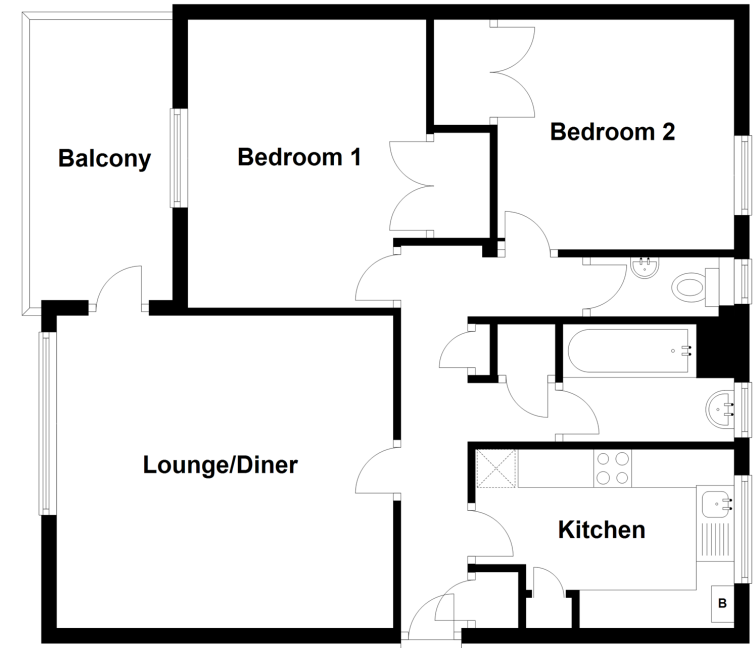
### OUTSIDE

Balcony

Communal Garden

### First Floor

Approx. 64.7 sq. metres (696.7 sq. feet)



**Call East Ham - 020 8472 8140 ■ [douglasallen.co.uk](http://douglasallen.co.uk)**

- A private rental licensing scheme applies to some properties in this area, please contact us before proceeding
- Legal advice should be taken to verify fixtures/fittings, planning, alterations and/or lease details
- Appliances & services are untested, dimensions are approximate and floor plans are not to scale
- Through a Homewise Home For Life Plan people aged 60+ can secure this property for up to 59% less, by purchasing a Lifetime Lease.



51314160/20231129/CN/MG4