



Price
£100,000

Leasehold

1x  1x  1x 

**Homebush House, Kings
Head Hill, Chingford, E4**

OVER 60?

Secure this property
for up to **59% less!**

 **DOUGLAS
ALLEN**
Helping you move forwards



Main features

- 1 bed second floor retirement apartment
- Modern development
- On site house manager
- Residents' lounge
- Secure permit car park & communal gardens
- Modern development in the sought after North Chingford location

Accommodation

SECOND FLOOR

Lounge: 18'4 x 10'5 (5.59m x 3.18m)

Kitchen: 7'2 x 5'4 (2.19m x 1.63m)

Bedroom: 12'2 x 8'9 (3.71m x 2.67m)

Bathroom: 6'7 x 5'5 (2.01m x 1.65m)

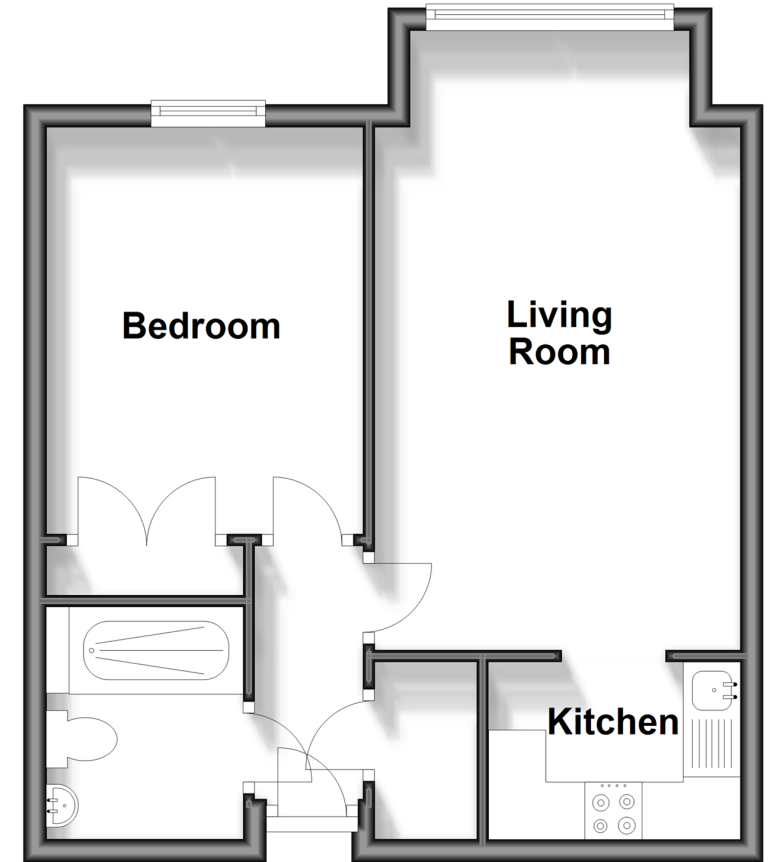
OUTSIDE

Communal Gardens

Permit Parking

Second Floor

Approx. 39.3 sq. metres (422.8 sq. feet)



Call Chingford - 020 8524 6331 ■ douglasallen.co.uk

- A private rental licensing scheme applies to some properties in this area, please contact us before proceeding
- Legal advice should be taken to verify fixtures/fittings, planning, alterations and/or lease details
- Appliances & services are untested, dimensions are approximate and floor plans are not to scale
- Through a Homewise Home For Life Plan people aged 60+ can secure this property for up to 59% less, by purchasing a Lifetime Lease.



51013331/20240325/KS/MS