



OVER 60?

Secure this property
for up to **59% less!**

Price

£625,000

Freehold

3x  1x  1x 

**Larkshall Road,
Chingford, E4**



**DOUGLAS
ALLEN**

Helping you move forwards



Main features

- Mid terraced house
- 5 minute walk to Highams Park Station
- Modern kitchen & large bathroom
- Recently refurbished to a high standard
- Driveway & easy access to Chingford golf course & Epping Forest

Accommodation

GROUND FLOOR

Lounge: 13'6 x 13'1 (4.12m x 3.99m)

Living Room: 11'8 x 11'7 (3.56m x 3.53m)

Kitchen: 10'9 x 7'1 (3.28m x 2.16m)

FIRST FLOOR

Bedroom 1: 12'9 x 11'8 (3.89m x 3.56m)

Bedroom 2: 14'8 x 9'8 (4.47m x 2.95m)

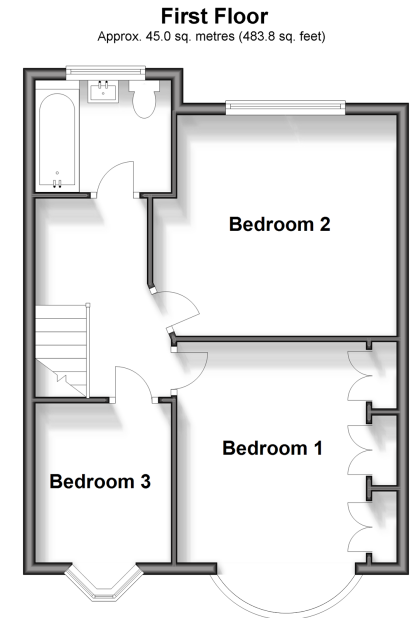
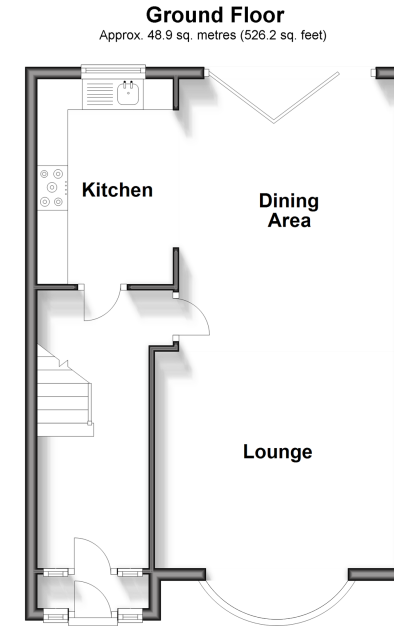
Bedroom 3: 8'7 x 6'9 (2.62m x 2.06m)

Bathroom

OUTSIDE

Driveway

Rear Garden



Call Chingford - 020 8524 6331 ■ douglasallen.co.uk

- A private rental licensing scheme applies to some properties in this area, please contact us before proceeding
- Legal advice should be taken to verify fixtures/fittings, planning, alterations and/or lease details
- Appliances & services are untested, dimensions are approximate and floor plans are not to scale
- Through a Homewise Home For Life Plan people aged 60+ can secure this property for up to 59% less, by purchasing a Lifetime Lease.



51013314/20240511/KS/DM