



Price
£550,000

Freehold

3x  1x  2x 

**Sinclair Road,
Chingford, E4**

 **DOUGLAS
ALLEN**
Helping you move forwards



Main features

- Charming family home offered for sale
- Secluded rear garden in excess of 40ft
- Large lounge and fitted kitchen
- Conveniently located for easy access to a variety of shops, bars & restaurants
- Can be extended STP

Accommodation

GROUND FLOOR

Lounge/Dining Room: 24'5 x 11'4 (7.45m x 3.46m)

Breakfast Area: 13'2 x 10'4 (4.02m x 3.15m)

Kitchen: 15'3 x 9'5 (4.65m x 2.87m)

FIRST FLOOR

Bedroom 1: 15'0 x 11'2 (4.58m x 3.41m)

Bedroom 2: 11'2 x 9'5 (3.41m x 2.87m)

Bedroom 3: 9'0 x 6'2 (2.75m x 1.88m)

Bathroom : 6'4 x 5'4 (1.93m x 1.63m)

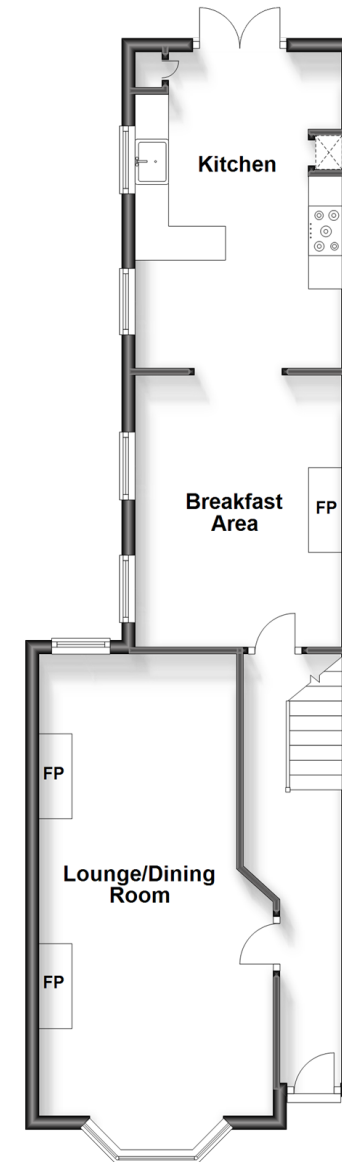
OUTSIDE

Driveway

Rear Garden

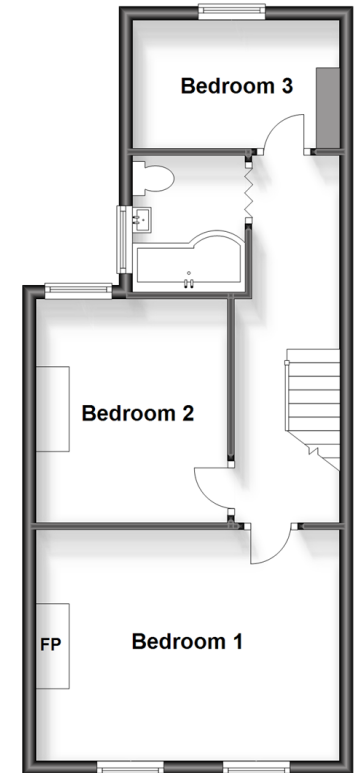
Ground Floor

Approx. 58.0 sq. metres (624.7 sq. feet)



First Floor

Approx. 43.6 sq. metres (468.9 sq. feet)



Call Chingford - 020 8524 6331 ■ douglasallen.co.uk

- A private rental licensing scheme applies to some properties in this area, please contact us before proceeding
- Legal advice should be taken to verify fixtures/fittings, planning, alterations and/or lease details
- Appliances & services are untested, dimensions are approximate and floor plans are not to scale