



Price
£235,000

**Share of
Freehold**

1x  1x  1x 

**Ingrebourne Court,
Chingford Avenue,
Chingford, E4**

 **DOUGLAS
ALLEN**
Helping you move forwards



Main features

- First floor flat with private entrance
- In good condition throughout
- Permit parking available on a first come, first served basis
- Close to Ridgeway Park
- Excellent bus routes within the area
- Close to shops and restaurants
- Ideal first purchase or buy to let investment

Accommodation

FIRST FLOOR

Entrance Hall

Lounge/Kitchen/Dining Room: 16'5 maximum x 13'8 maximum (5.01m x 4.17m)

Bedroom : 13'8 x 8'5 (4.17m x 2.57m)

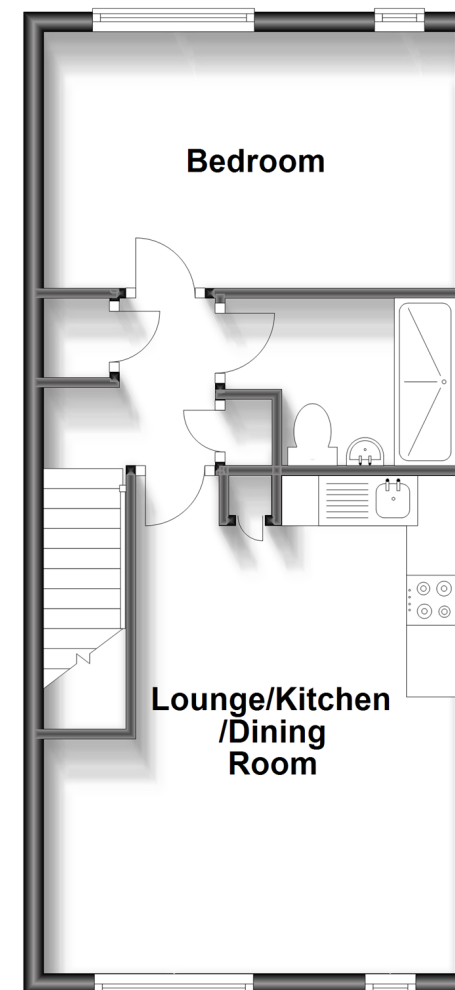
Shower Room

OUTSIDE

Communal Garden

First Floor

Approx. 39.2 sq. metres (421.9 sq. feet)



Call Chingford - 020 8524 6331 ■ douglasallen.co.uk

- A private rental licensing scheme applies to some properties in this area, please contact us before proceeding
- Legal advice should be taken to verify fixtures/fittings, planning, alterations and/or lease details
- Appliances & services are untested, dimensions are approximate and floor plans are not to scale



51013200/20231030/DM/JB