



Price
£475,000

Freehold

2x  1x  1x 

**Winchester Road,
London, E4**

 **DOUGLAS
ALLEN**
Helping you move forwards



Main features

- Within walking distance of Highams Park Station
- In need of modernisation
- Potential to extend, subject to planning permission
- Good schools within the area

Accommodation

GROUND FLOOR

Entrance Porch
Entrance Hall
Lounge: 16'2 x 11'9 (4.93m x 3.58m)
Dining Area : 11'9 x 11'7 (3.58m x 3.53m)
Kitchen : 7'11 x 6'7 (2.41m x 2.01m)
Utility Room : 5'5 x 4'0 (1.65m x 1.22m)
Toilet

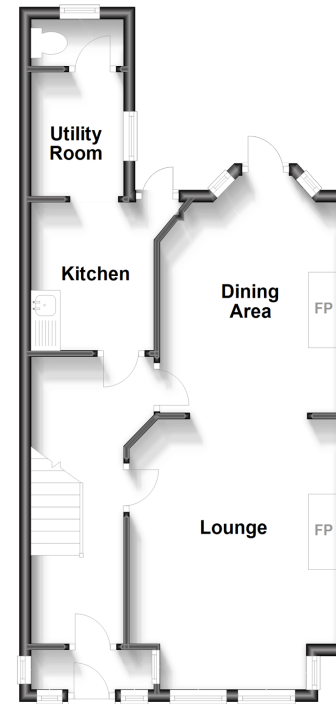
FIRST FLOOR

Landing
Bedroom 1: 17'0 x 13'8 (5.19m x 4.17m)
Bedroom 2: 11'6 x 7'10 (3.51m x 2.39m)
Bathroom

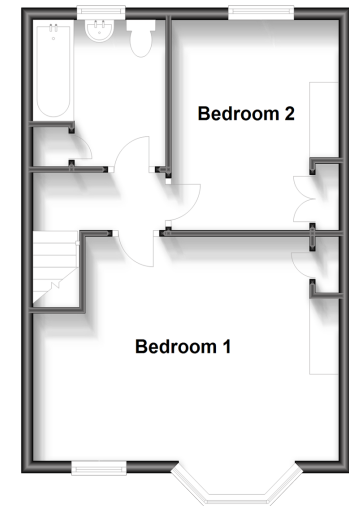
OUTSIDE

Front Garden
Rear Garden

Ground Floor
Approx. 47.3 sq. metres (508.8 sq. feet)



First Floor
Approx. 38.6 sq. metres (415.4 sq. feet)



Call Chingford - 020 8524 6331 ■ douglasallen.co.uk

- A private rental licensing scheme applies to some properties in this area, please contact us before proceeding
- Appliances & services are untested, dimensions are approximate and floor plans are not to scale

- Legal advice should be taken to verify fixtures/fittings, planning, alterations and/or lease details



51013177/20231009/KS/JC