



Price

£285,000

Leasehold

2x  1x  1x 

**Kingsley Gardens,
London, E4**

OVER 60?

Secure this property
for up to **59% less!**

 **DOUGLAS
ALLEN**
Helping you move forwards



Main features

- Ground floor maisonette in a quiet cu-de-sac
- Private front and rear gardens
- Short walk to Memorial Park
- Close to Chingford Mounts shops and restaurants
- Good selection of bus routes in the area

Accommodation

GROUND FLOOR

Entrance Hall

Lounge: 12'5 x 11'6 (3.79m x 3.51m)

Kitchen: 10'3 x 6'10 (3.13m x 2.08m)

Bedroom 1: 11'5 x 10'8 (3.48m x 3.25m)

Bedroom 2: 9'8 x 7'10 (2.95m x 2.39m)

Shower Room

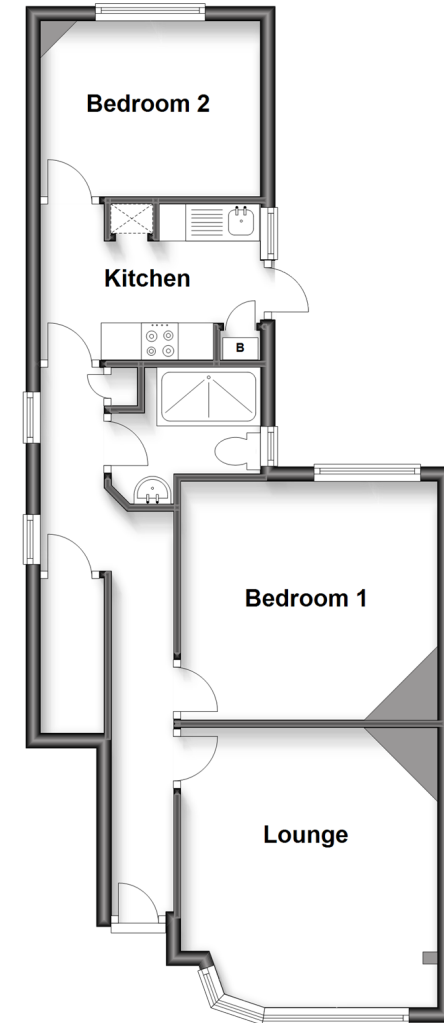
OUTSIDE

Front Garden

Rear Garden

Ground Floor

Approx. 51.8 sq. metres (557.1 sq. feet)



Call Chingford - 020 8524 6331 ■ douglasallen.co.uk

- A private rental licensing scheme applies to some properties in this area, please contact us before proceeding
- Legal advice should be taken to verify fixtures/fittings, planning, alterations and/or lease details
- Appliances & services are untested, dimensions are approximate and floor plans are not to scale
- Through a Homewise Home For Life Plan people aged 60+ can secure this property for up to 59% less, by purchasing a Lifetime Lease.



51013146/20230422/CP/JB