



Guide Price
£190,000

Leasehold

2x  1x  1x 

**Riverside Court,
Chelwood Close,
London, E4**



Main features

- First floor retirement flat with an on site manager
- Emergency pull cord system
- Communal garden
- Excellent bus routes nearby
- Within walking distance of a selection of shops
- Lease extended on 2014

Accommodation

FIRST FLOOR

Entrance Hall

Lounge/Diner : 18'2 x 10'6 (5.54m x 3.20m)

Kitchen : 8'2 x 7'6 (2.49m x 2.29m)

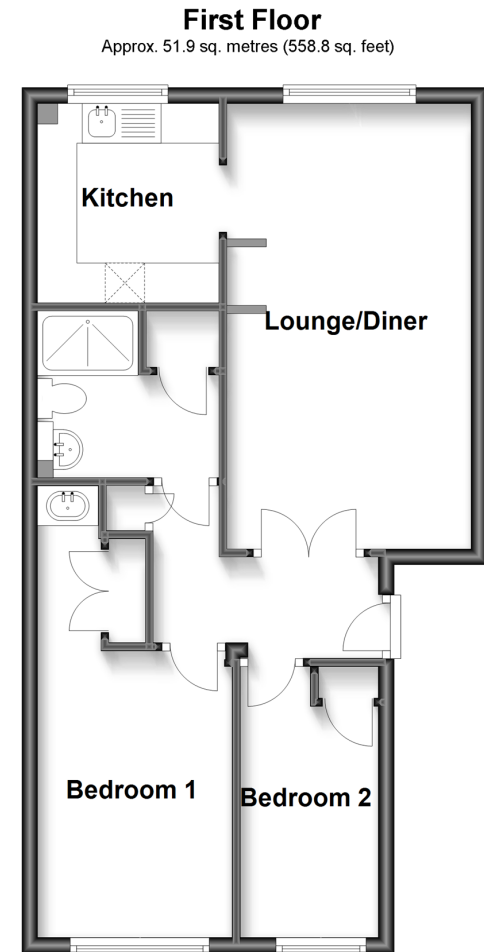
Bedroom 1 : 17'9 x 8'4 (5.41m x 2.54m)

Bedroom 2: 11'1 x 5'9 (3.38m x 1.75m)

Shower Room

OUTSIDE

Communal Garden



Call Chingford - 020 8524 6331 ■ douglasallen.co.uk

- A private rental licensing scheme applies to some properties in this area, please contact us before proceeding
- Legal advice should be taken to verify fixtures/fittings, planning, alterations and/or lease details
- Appliances & services are untested, dimensions are approximate and floor plans are not to scale



51013112/20230510/JB/JB