



**Offers In
Excess Of
£115,000
Leasehold**

1x  1x  1x 

**Homebush House, Kings
Head Hill, London, E4**



Main features

- First floor retirement flat
- Recently refurbished throughout including new kitchen and bathroom
- Lift access to all floors
- Modern development in the sought after North Chingford location
- On site house manager
- Secure unallocated car park
- Residents lounge

Accommodation

FIRST FLOOR

Entrance Hall

Living Room : 17'6 x 10'7 (5.34m x 3.23m)

Kitchen: 7'5 x 5'5 (2.26m x 1.65m)

Bedroom : 11'6 x 9'0 (3.51m x 2.75m)

Bathroom

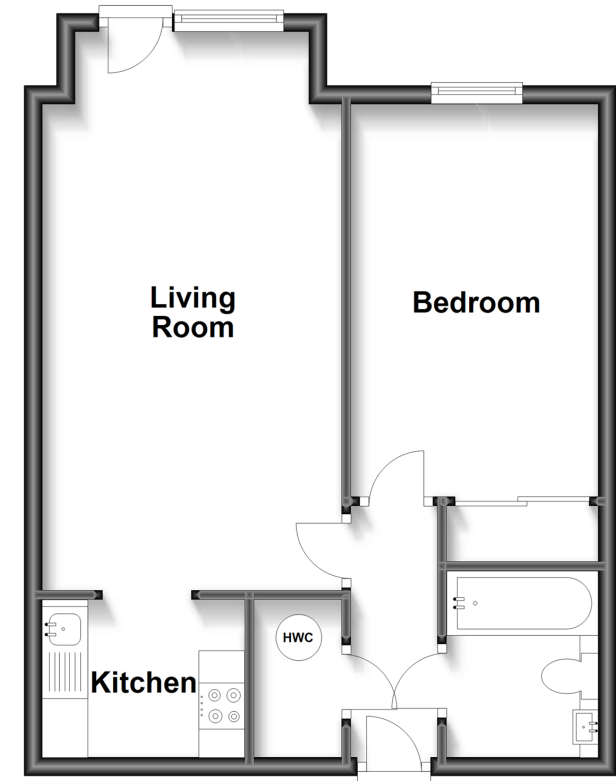
OUTSIDE

Communal Garden

Resident Lounge

First Floor

Approx. 45.1 sq. metres (485.8 sq. feet)



Call Chingford - 020 8524 6331 ■ douglasallen.co.uk

- A private rental licensing scheme applies to some properties in this area, please contact us before proceeding
- Legal advice should be taken to verify fixtures/fittings, planning, alterations and/or lease details
- Appliances & services are untested, dimensions are approximate and floor plans are not to scale



51013085/20231113/KS/JB