



Guide Price
£500,000

Freehold

2x  1x  1x 

**Harford Close, London,
E4**

OVER 60?

Secure this property
for up to **59% less!**



Video Tour available



**DOUGLAS
ALLEN**

Helping you move forwards



Main features

- Situated in a quiet cul-de-sac in North Chingford
- Close to Epping Forest
- Near to a selection of shops
- Good bus routes within the area
- Potential to extend, subject to planning permission
- Good size off street parking

Accommodation

GROUND FLOOR

Entrance Hall

Lounge/Diner: 18'9 x 11'4 (5.72m x 3.46m)

Kitchen: 10'4 x 5'8 (3.15m x 1.73m)

Bedroom 1: 10'4 x 7'3 (3.15m x 2.21m)

Bedroom 2: 11'5 x 6'9 (3.48m x 2.06m)

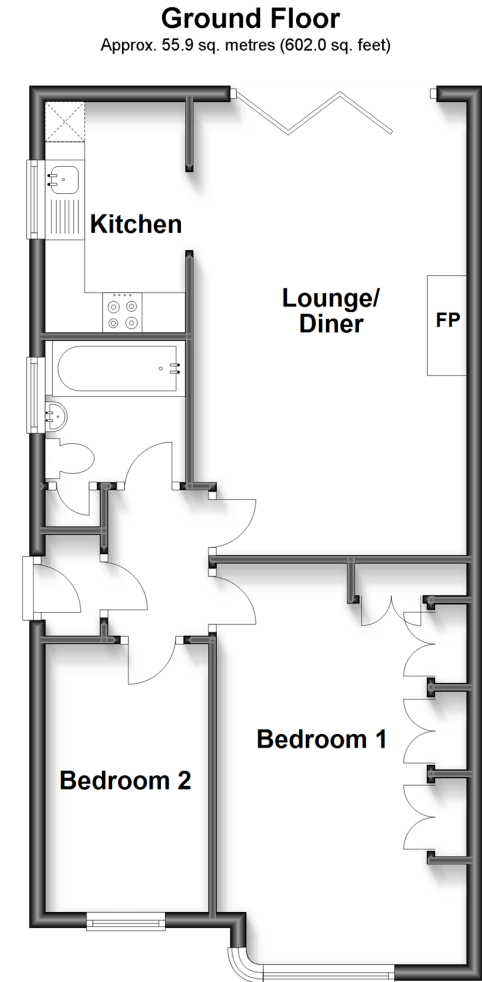
Bathroom

OUTSIDE

Off Street Parking

Front Garden

Rear Garden



Call Chingford - 020 8524 6331 ■ douglasallen.co.uk

- A private rental licensing scheme applies to some properties in this area, please contact us before proceeding
- Legal advice should be taken to verify fixtures/fittings, planning, alterations and/or lease details
- Appliances & services are untested, dimensions are approximate and floor plans are not to scale
- Through a Homewise Home For Life Plan people aged 60+ can secure this property for up to 59% less, by purchasing a Lifetime Lease.



51013071/20221210/CP/JB