



Price
£120,000

Leasehold

1x  1x  1x 

**Homebush House, Kings
Head Hill, London, E4**



Main features

- Ground floor flat
- Lift access to all floors
- Modern development in the sought after North Chingford location
- On site house manager
- Secure unallocated car park
- Residents lounge
- Attractive communal gardens
- 99 year lease

Accommodation

GROUND FLOOR

Entrance Hall

Living Room: 17'8 x 10'6 (5.39m x 3.20m)

Kitchen: 7'5 x 5'4 (2.26m x 1.63m)

Bedroom : 11'4 x 9'0 (3.46m x 2.75m)

Bathroom

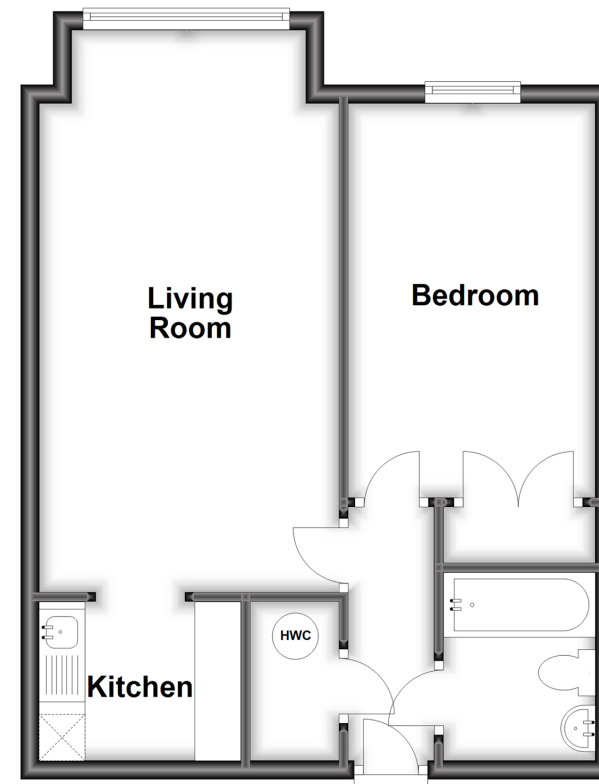
OUTSIDE

Communal Garden

Residents Lounge

Ground Floor

Approx. 44.9 sq. metres (483.8 sq. feet)



Call Chingford - 020 8524 6331 ■ douglasallen.co.uk

- A private rental licensing scheme applies to some properties in this area, please contact us before proceeding
- Legal advice should be taken to verify fixtures/fittings, planning, alterations and/or lease details
- Appliances & services are untested, dimensions are approximate and floor plans are not to scale



51013003/20230204/JCS/JB