



Price
£350,000

Freehold

2x  1x  2x 

New Road, London, E4

OVER 60?

Secure this property
for up to **59% less!**

 **DOUGLAS
ALLEN**
Helping you move forwards



Main features

- In need of modernisation
- Located close to Chingford Mounts shops and restaurants
- Walking distance to Larkwood Primary School
- Excellent bus routes in the area
- Being sold chain free

Accommodation

GROUND FLOOR

Entrance Hall

Lounge : 11'2 x 10'1 (3.41m x 3.08m)

Dining Area: 10'11 x 10'5 (3.33m x 3.18m)

Bedroom 3 : 7'8 x 7'0 (2.34m x 2.14m)

Utility Area : 9'4 x 6'5 (2.85m x 1.96m)

Kitchen : 10'11 x 7'6 (3.33m x 2.29m)

Bathroom

FIRST FLOOR

Landing

Bedroom 1 : 11'1 x 10'5 (3.38m x 3.18m)

Bedroom 2 : 11'1 x 10'8 (3.38m x 3.25m)

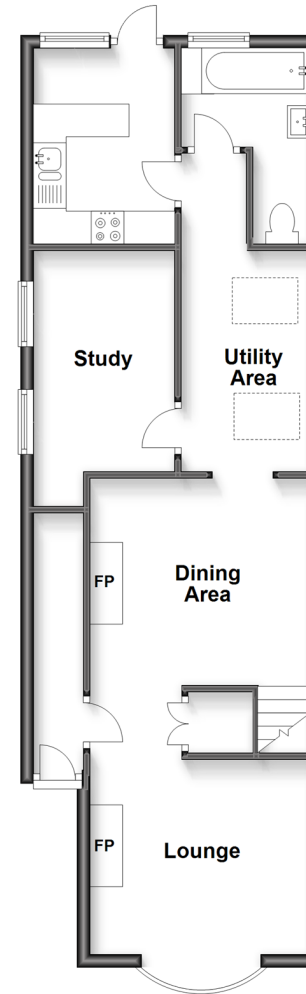
OUTSIDE

Front Garden

Rear Garden

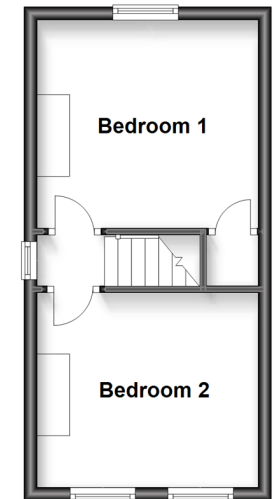
Ground Floor

Approx. 56.7 sq. metres (610.6 sq. feet)



First Floor

Approx. 24.2 sq. metres (260.5 sq. feet)



Call Chingford - 020 8524 6331 ■ douglasallen.co.uk

- A private rental licensing scheme applies to some properties in this area, please contact us before proceeding
- Legal advice should be taken to verify fixtures/fittings, planning, alterations and/or lease details
- Appliances & services are untested, dimensions are approximate and floor plans are not to scale
- Through a Homewise Home For Life Plan people aged 60+ can secure this property for up to 59% less, by purchasing a Lifetime Lease.



51013002/20230327/CP/JB