



**Guide Price**  
**£300,000**

**Leasehold**

2x  1x  1x 

**Retingham Way,  
London, E4**

**OVER 60?**

Secure this property  
for up to **59% less!**

 **DOUGLAS  
ALLEN**  
Helping you move forwards



## Main features

- Split level first floor maisonette with double bedrooms
- Large communal garden
- Ideal first purchase or buy to let investment
- Close to Ridgeway Park
- Good bus routes within the area
- Well presented throughout

## Accommodation

### FIRST FLOOR

Entrance Hall

Lounge/Diner: 13'8 x 12'4 (4.17m x 3.76m)

Kitchen: 11'1 x 8'5 (3.38m x 2.57m)

### SECOND FLOOR

Landing

Bedroom 1: 13'7 x 10'6 (4.14m x 3.20m)

Bedroom 2: 13'7 x 10'6 (4.14m x 3.20m)

Bathroom

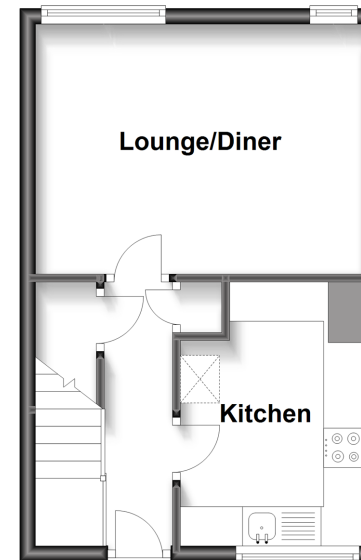
Separate Toilet

### OUTSIDE

Communal Garden

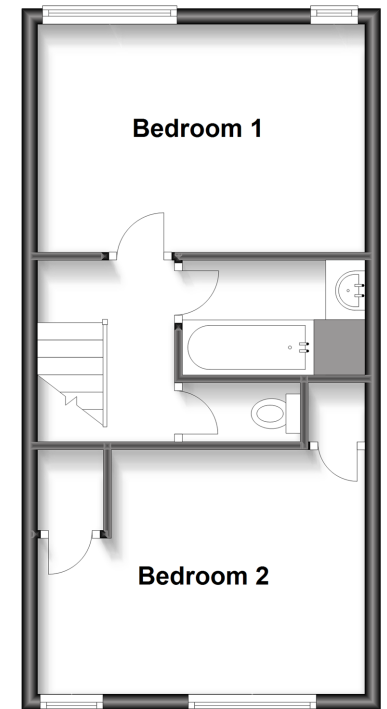
### First Floor

Approx. 27.7 sq. metres (298.1 sq. feet)



### Second Floor

Approx. 35.5 sq. metres (382.3 sq. feet)



**Call Chingford - 020 8524 6331 ■ [douglasallen.co.uk](http://douglasallen.co.uk)**

- A private rental licensing scheme applies to some properties in this area, please contact us before proceeding
- Legal advice should be taken to verify fixtures/fittings, planning, alterations and/or lease details
- Appliances & services are untested, dimensions are approximate and floor plans are not to scale
- Through a Homewise Home For Life Plan people aged 60+ can secure this property for up to 59% less, by purchasing a Lifetime Lease.



51012996/20230131/JB/JB