



Guide Price
£375,000

Freehold

2x  1x  1x 

**Mapleton Road,
Chingford, E4**

OVER 60?

Secure this property
for up to **59% less!**



Video Tour available



**DOUGLAS
ALLEN**

Helping you move forwards



Main features

- Ideal first purchase
- Situated in a quiet cul-de-sac in a modern development
- Good bus routes nearby
- Off street parking
- Close to Longshaw and Larkwood Primary Schools
- In ready to move into condition

Accommodation

GROUND FLOOR

Entrance Porch

Kitchen : 9'9 x 8'8 (2.97m x 2.64m)

Lounge/Diner: 19'8 x 9'9 (6.00m x 2.97m)

FIRST FLOOR

Landing

Bedroom 1 : 10'7 x 9'9 (3.23m x 2.97m)

Bedroom 2: 9'9 x 6'7 (2.97m x 2.01m)

Bathroom

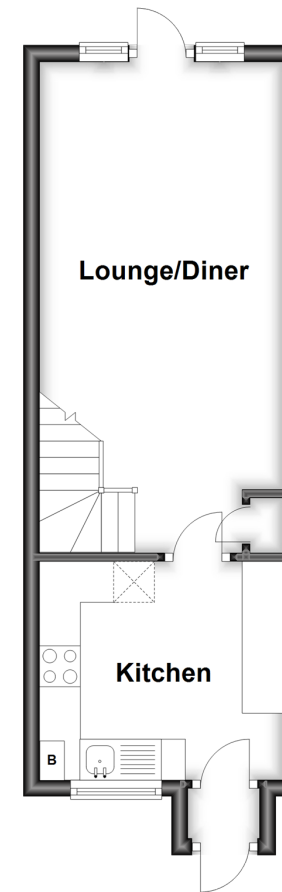
OUTSIDE

Off Street Parking

Rear Garden

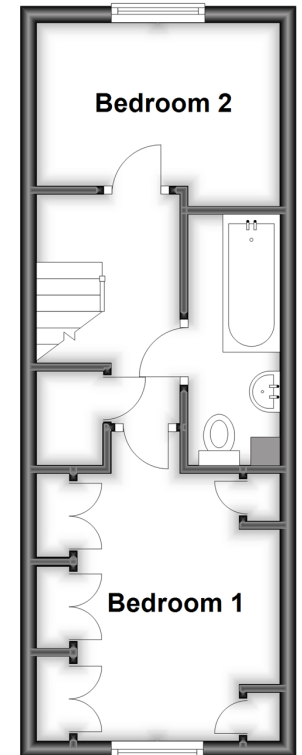
Ground Floor

Approx. 26.8 sq. metres (288.1 sq. feet)



First Floor

Approx. 26.1 sq. metres (281.3 sq. feet)



Call Chingford - 020 8524 6331 ■ douglasallen.co.uk

- A private rental licensing scheme applies to some properties in this area, please contact us before proceeding
- Legal advice should be taken to verify fixtures/fittings, planning, alterations and/or lease details
- Appliances & services are untested, dimensions are approximate and floor plans are not to scale
- Through a Homewise Home For Life Plan people aged 60+ can secure this property for up to 59% less, by purchasing a Lifetime Lease.



51012984/20230405/JCS/JB