



Price

£260,000

Leasehold

2x  1x  1x 

**Hatch Lane, Chingford,
E4**

OVER 60?

Secure this property
for up to **59% less!**



Video Tour available



**DOUGLAS
ALLEN**

Helping you move forwards



Main features

- Split level first floor flat
- 2 double bedrooms
- Cash buyers only
- Direct access to own terrace
- Good transport links in the area
- Being sold chain free

Accommodation

FIRST FLOOR

Entrance Hall

Lounge/Diner: 17'6 x 12'0 (5.34m x 3.66m)

Kitchen : 10'0 x 9'11 (3.05m x 3.02m)

SECOND FLOOR

Landing

Bedroom 1: 17'9 x 10'3 (5.41m x 3.13m)

Bedroom 2: 11'9 x 9'4 (3.58m x 2.85m)

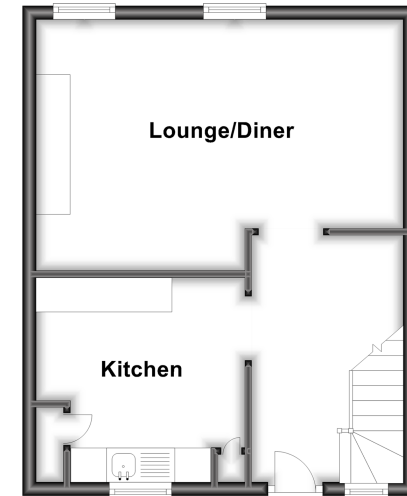
Bathroom

OUTSIDE

Terrace Area

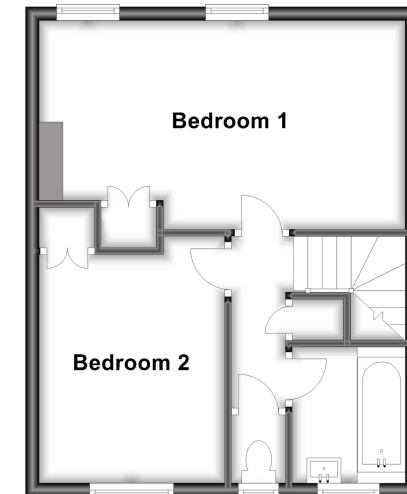
First Floor

Approx. 36.4 sq. metres (391.6 sq. feet)



Second Floor

Approx. 36.4 sq. metres (391.6 sq. feet)



Call Chingford - 020 8524 6331 ■ douglasallen.co.uk

- A private rental licensing scheme applies to some properties in this area, please contact us before proceeding
- Legal advice should be taken to verify fixtures/fittings, planning, alterations and/or lease details
- Appliances & services are untested, dimensions are approximate and floor plans are not to scale
- Through a Homewise Home For Life Plan people aged 60+ can secure this property for up to 59% less, by purchasing a Lifetime Lease.



51012950/20230131/CP/JR