



**Price**

**£105,000**

**Leasehold**

1x  1x  1x 

**Homebush House, Kings  
Head Hill, Chingford, E4**



**Video Tour available**



**DOUGLAS  
ALLEN**

Helping you move forwards



## Main features

- Modern development in the sought after North Chingford location
- Good bus routes nearby
- On site house manager
- Secure unallocated car park
- Residents lounge
- Attractive communal gardens
- Being sold chain free

## Accommodation

### FIRST FLOOR

Entrance Hall

Lounge/Diner: 13'4 x 10'6 (4.07m x 3.20m)

Kitchen : 7'3 x 5'0 (2.21m x 1.53m)

Bedroom : 12'2 x 8'8 (3.71m x 2.64m)

Shower Room

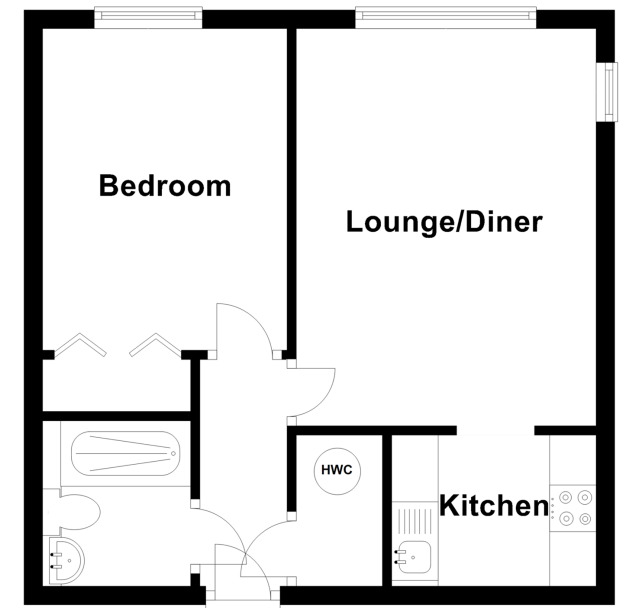
### OUTSIDE

Communal Garden

Residents Lounge

## First Floor

Approx. 35.6 sq. metres (383.5 sq. feet)



**Call Chingford - 020 8524 6331 ■ [douglasallen.co.uk](http://douglasallen.co.uk)**

- A private rental licensing scheme applies to some properties in this area, please contact us before proceeding
- Legal advice should be taken to verify fixtures/fittings, planning, alterations and/or lease details
- Appliances & services are untested, dimensions are approximate and floor plans are not to scale



51012911/20230627/JB/JB