



**Guide Price**  
**£235,000**

**Leasehold**

1x  1x  1x 

**Lockwood Place,  
Chingford, E4**

**OVER 60?**

You could get up to  
**59% off** the price!\*

 **DOUGLAS  
ALLEN**  
Helping you move forwards

## Main features

- Second floor flat
- Allocated parking space and a balcony
- Private loft space providing extra storage
- 125 year lease granted in 2010
- Ideally located for Morrisons and Chingford Mounts amenities
- Excellent bus routes in the area

## Accommodation

### SECOND FLOOR

#### Entrance Hall

**Lounge/Dining/Kitchen Area:** 19'9 x 13'7  
(6.02m x 4.14m)

#### Balcony

**Bedroom :** 11'10 x 10'5 (3.61m x 3.18m)

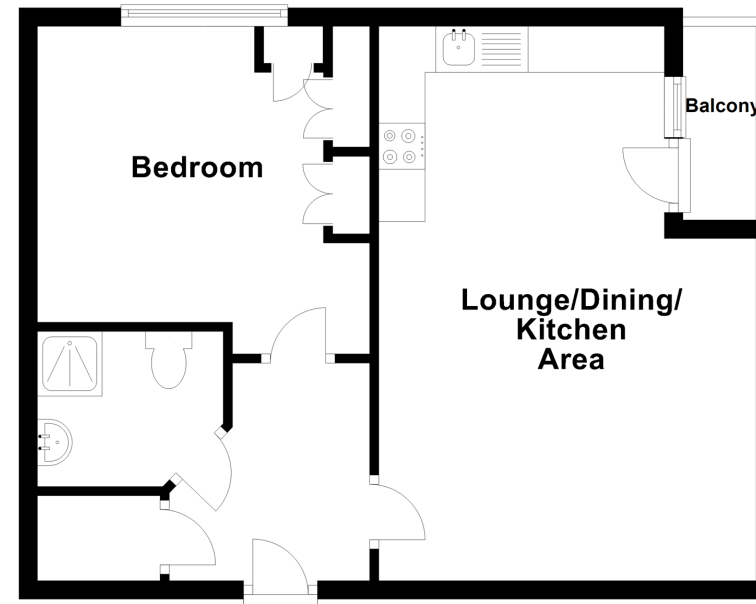
#### Shower Room

### OUTSIDE

#### Allocated Parking Space

#### Communal Garden

**Second Floor**  
Approx. 44.5 sq. metres (478.6 sq. feet)



**Call Chingford - 020 8524 6331 ■ [douglasallen.co.uk](http://douglasallen.co.uk)**

- A private rental licensing scheme applies to some properties in this area, please contact us before proceeding
- Appliances & services are untested, dimensions are approximate and floor plans are not to scale

- Legal advice should be taken to verify fixtures/fittings, planning, alterations and/or lease details
- Our Homewise partnership offer a 'Home for Life' plan to buyers over 60, granting a lifetime lease for your protection and reducing the purchase price by up to 59%

