



Price

£260,000

Leasehold

1x  1x  1x 

**King Henry Lodge, Hall
Lane, Chingford,
London, E4**



Video Tour available



**DOUGLAS
ALLEN**

Helping you move forwards



Main features

- First floor RETIREMENT FLAT
- Unallocated communal parking and garden
- Guest suite available for visitors
- Excellent bus routes nearby
- Close to shops
- Within walking distance of Chase Lane Park
- Being sold chain free

Accommodation

FIRST FLOOR

Entrance Hall

Lounge/Diner: 22'11 x 10'7 (6.99m x 3.23m)

Bedroom: 17'2 (5.24m) x 9'3 (2.82m) narrowing to 5'2 (1.58m)

Kitchen: 8'1 x 7'8 (2.47m x 2.34m)

Shower Room

OUTSIDE

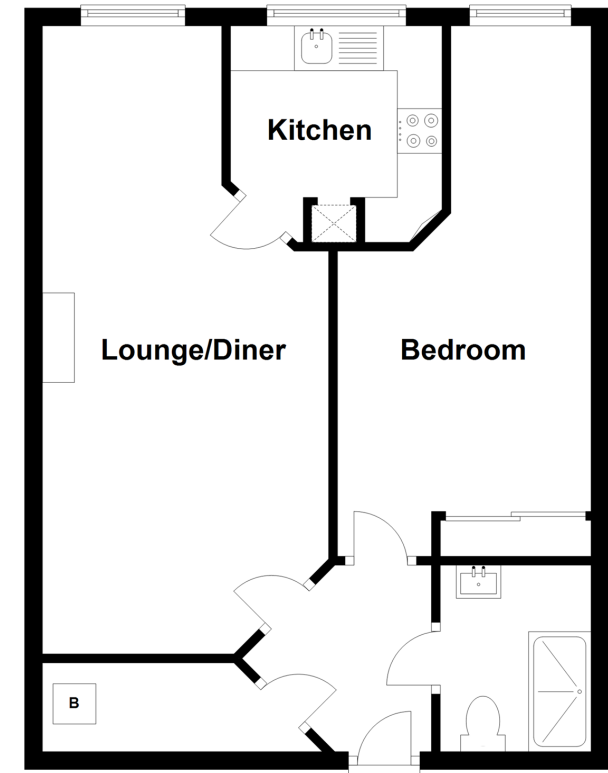
Guest Suite

Communal Garden

Unallocated Communal Parking

First Floor

Approx. 49.8 sq. metres (536.1 sq. feet)



Call Chingford - 020 8524 6331 ■ douglasallen.co.uk

- A private rental licensing scheme applies to some properties in this area, please contact us before proceeding
- Legal advice should be taken to verify fixtures/fittings, planning, alterations and/or lease details
- Appliances & services are untested, dimensions are approximate and floor plans are not to scale



51012877/20230301/JB/JR