



OVER 60?

Secure this property
for up to **59% less!**

Price

£180,000

Leasehold

1x  1x  1x 

**Godwin Close,
Sewardstone Road,
Chingford, London, E4**



**DOUGLAS
ALLEN**

Helping you move forwards



Main features

- Ground floor studio apartment
- Communal gardens
- Refurbished and a 99 year lease from 2021
- Semi-rural location close to the reservoirs
- Close to M25 for commuters
- Ideal starter home for someone looking to move straight in

Accommodation

GROUND FLOOR

Bedroom/Lounge: 12'4 x 7'2 (3.76m x 2.19m)

Kitchen : 6'2 x 3'7 (1.88m x 1.09m)

Shower Room

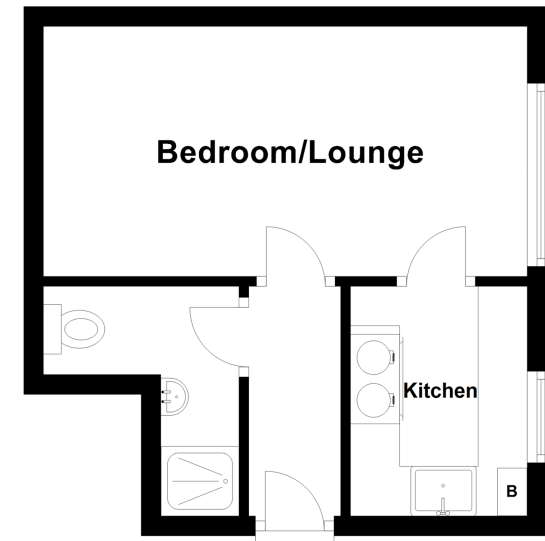
OUTSIDE

Allocated Parking Space

Communal Garden

Ground Floor

Approx. 22.6 sq. metres (243.1 sq. feet)



Call Chingford - 020 8524 6331 ■ douglasallen.co.uk

- A private rental licensing scheme applies to some properties in this area, please contact us before proceeding
- Legal advice should be taken to verify fixtures/fittings, planning, alterations and/or lease details
- Appliances & services are untested, dimensions are approximate and floor plans are not to scale
- Through a Homewise Home For Life Plan people aged 60+ can secure this property for up to 59% less, by purchasing a Lifetime Lease.



51012791/20221202/JB/JB