



Price
£325,000

Leasehold

2x  1x  1x 

**Hawthorne Court,
Higham Station Avenue,
London, E4**

OVER 60?

You could get up to
59% off the price!*



Video Tour available



**DOUGLAS
ALLEN**

Helping you move forwards



Main features

- Ground floor flat within walking distance of Highams Park Station
- Allocated parking space
- Communal garden
- Close to the shops and restaurants in Highams Park
- Ideal first purchase or buy to let investment

Accommodation

GROUND FLOOR

Entrance Hall

Lounge : 18'2 x 13'3 (5.54m x 4.04m)

Kitchen: 7'6 x 3'1 (2.29m x 0.94m)

Bedroom 1: 11'3 x 8'4 (3.43m x 2.54m)

Bedroom 2: 11'0 x 5'9 (3.36m x 1.75m)

Bathroom

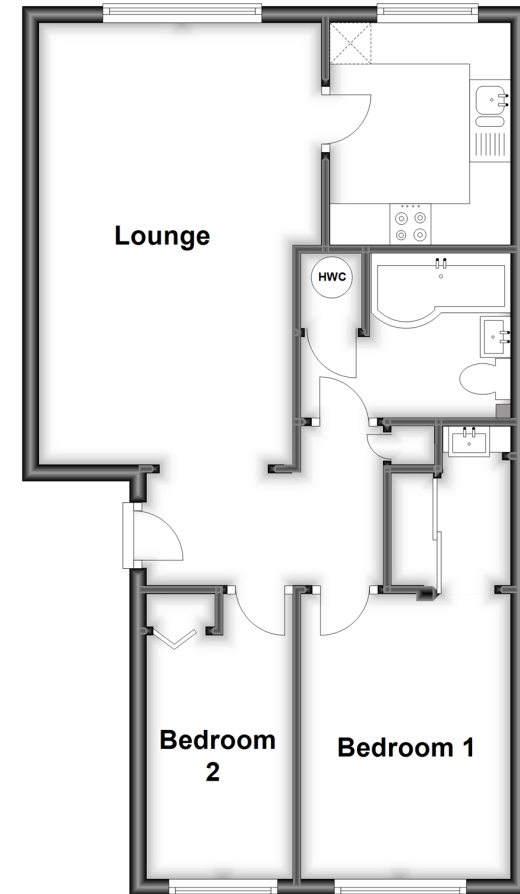
OUTSIDE

Allocated Parking Space

Communal Garden

Ground Floor

Approx. 53.2 sq. metres (572.9 sq. feet)



Call Chingford - 020 8524 6331 ■ douglasallen.co.uk

- A private rental licensing scheme applies to some properties in this area, please contact us before proceeding
- Legal advice should be taken to verify fixtures/fittings, planning, alterations and/or lease details
- Appliances & services are untested, dimensions are approximate and floor plans are not to scale
- Our Homewise partnership offer a 'Home for Life' plan to buyers over 60, granting a lifetime lease for your protection and reducing the purchase price by up to 59%



51012785/20220805/JB/JR