



OVER 60?

Secure this property
for up to **59% less!**

Price

£650,000

Freehold

4x  2x  1x 

**Brindwood Road,
London, E4**



**DOUGLAS
ALLEN**

Helping you move forwards



Main features

- A beautifully presented extended house
- En-suite shower room to bedroom 1
- Stunning views across the reservoir
- Close to Chingford Foundation School and primary schools
- Easy access to Chingford Mount's amenities

Accommodation

GROUND FLOOR

Entrance Porch
Entrance Hall
Lounge/Diner : 27'6 x 11'8 (8.39m x 3.56m)
Kitchen : 20'1 x 8'3 (6.13m x 2.52m)

FIRST FLOOR

Landing
Bedroom 2: 14'3 x 11'8 (4.35m x 3.56m)
Bedroom 3 : 12'1 x 10'9 (3.69m x 3.28m)
Bedroom 4 : 6'11 x 5'1 (2.11m x 1.55m)
Bathroom

SECOND FLOOR

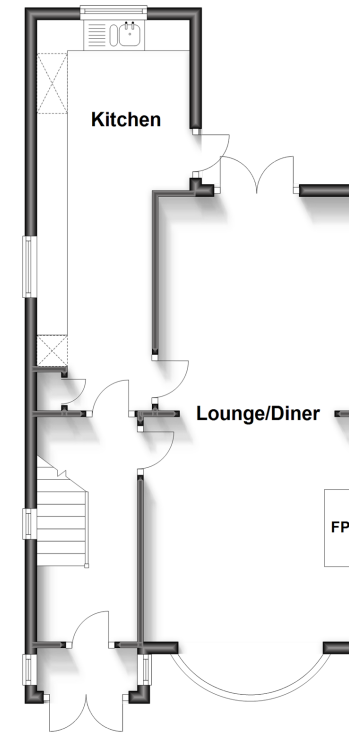
Landing
Bedroom 1: 17'3 x 10'2 (5.26m x 3.10m)
En-Suite Shower Room

OUTSIDE

Off Street Parking
Rear Garden

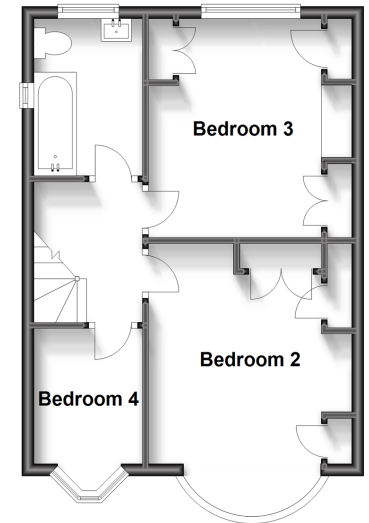
Ground Floor

Approx. 46.7 sq. metres (502.8 sq. feet)



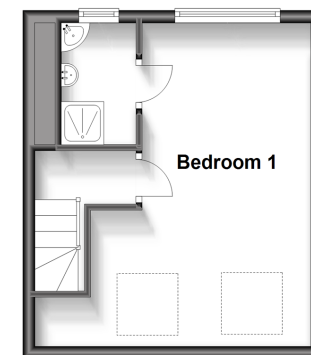
First Floor

Approx. 38.2 sq. metres (411.7 sq. feet)



Second Floor

Approx. 23.8 sq. metres (256.1 sq. feet)



Call Chingford - 020 8524 6331 ■ douglasallen.co.uk

- A private rental licensing scheme applies to some properties in this area, please contact us before proceeding
- Legal advice should be taken to verify fixtures/fittings, planning, alterations and/or lease details
- Appliances & services are untested, dimensions are approximate and floor plans are not to scale
- Through a Homewise Home For Life Plan people aged 60+ can secure this property for up to 59% less, by purchasing a Lifetime Lease.



51010853/20230715/CP/JB