



Price
£300,000

Leasehold

2x  1x  1x 

**Bowyer Court, The
Ridgeway, Chingford,
London, E4**

OVER 60?

Secure this property
for up to **59% less!**

 **DOUGLAS
ALLEN**
Helping you move forwards



Main features

- Great opportunity for a first time buyer
- High ceilings
- Close to train station and local amenities
- Excellent bus routes & transport links
- Close to good schools

Accommodation

SECOND FLOOR

Living Room: 12'1 x 10'1 (3.69m x 3.08m)

Kitchen: 7'10 x 6'0 (2.39m x 1.83m)

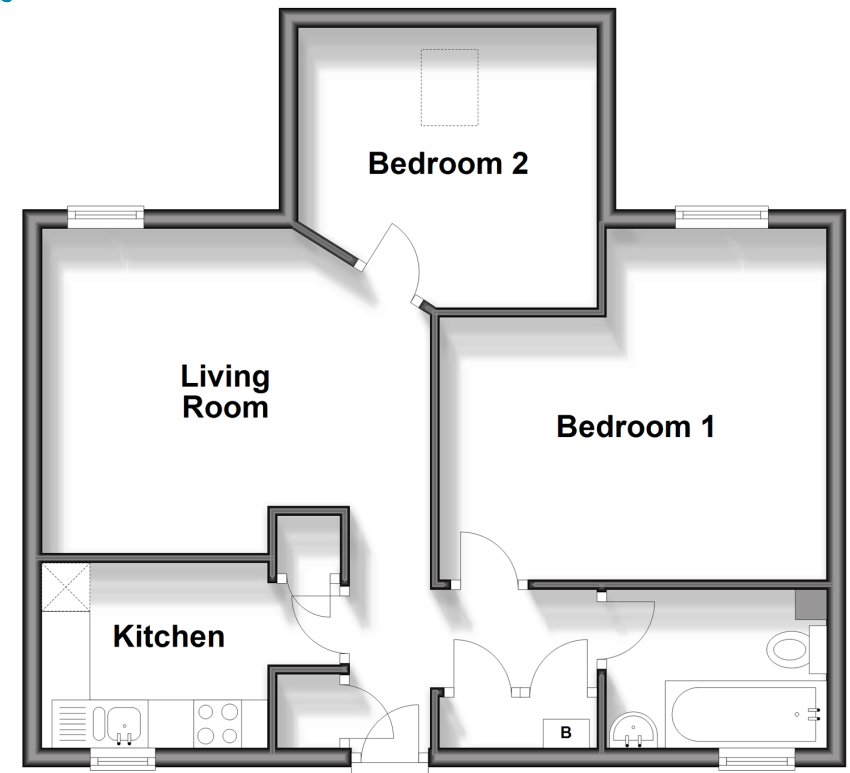
Bedroom 1: 12'1 x 12'0 (3.69m x 3.66m)

Bedroom 2: 10'0 x 9'1 (3.05m x 2.77m)

Bathroom: 7'1 x 5'0 (2.16m x 1.53m)

Second Floor

Approx. 50.6 sq. metres (545.2 sq. feet)



Call Chingford - 020 8524 6331 ■ douglasallen.co.uk

- A private rental licensing scheme applies to some properties in this area, please contact us before proceeding
- Legal advice should be taken to verify fixtures/fittings, planning, alterations and/or lease details
- Appliances & services are untested, dimensions are approximate and floor plans are not to scale
- Through a Homewise Home For Life Plan people aged 60+ can secure this property for up to 59% less, by purchasing a Lifetime Lease.



51006828/20240424/DM/JC