



**Price**

**£370,000**

**Freehold**

3x  1x  1x 

**Copperfield, Chigwell,  
Essex, IG7**





## Main features

- End of terrace family home
- Non standard construction
- Ideal first purchase
- Close to local schools including Fairlop and Manford Primary School
- Less than 1/2 mile to Hainault Central Line Station

## Accommodation

### GROUND FLOOR

Entrance Porch  
Hallway  
Lounge/Dining Area: (L-shaped) 16'0 x 10'0 (4.88m x 3.05m) plus 4'8 x 8'0 (1.42m x 2.44m)  
Kitchen: 10'0 x 9'10 (3.05m x 3.00m)

### FIRST FLOOR

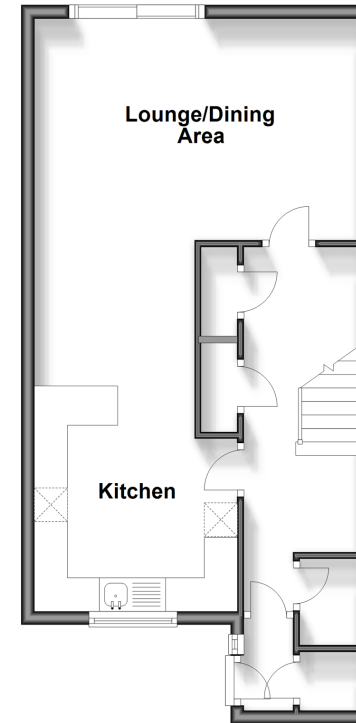
Landing  
Bedroom 1: 16'3 x 9'2 (4.96m x 2.80m)  
Bedroom 2: 9'0 x 7'8 (2.75m x 2.34m)  
Bedroom 3: 6'6 x 6'1 (1.98m x 1.86m)  
Bathroom

### OUTSIDE

Rear Garden

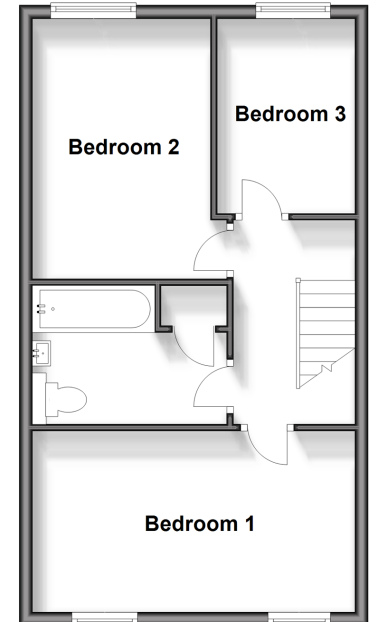
### Ground Floor

Approx. 45.6 sq. metres (490.5 sq. feet)



### First Floor

Approx. 43.0 sq. metres (463.4 sq. feet)



**Call Chigwell - 020 8501 2131 ■ [douglasallen.co.uk](http://douglasallen.co.uk)**

- This property is not standard construction which could affect mortgage lending, please contact us before proceeding
- A private rental licensing scheme applies to some properties in this area, please contact us before proceeding
- Legal advice should be taken to verify fixtures/fittings, planning, alterations and/or lease details
- Appliances & services are untested, dimensions are approximate and floor plans are not to scale



50903495/20240514/MS/MS