



Price
£525,000

Freehold

3x  2x  1x 

**Norwich Crescent,
Chadwell Heath, Essex,
RM6**

OVER 60?

Secure this property
for up to **59% less!**



Video Tour available

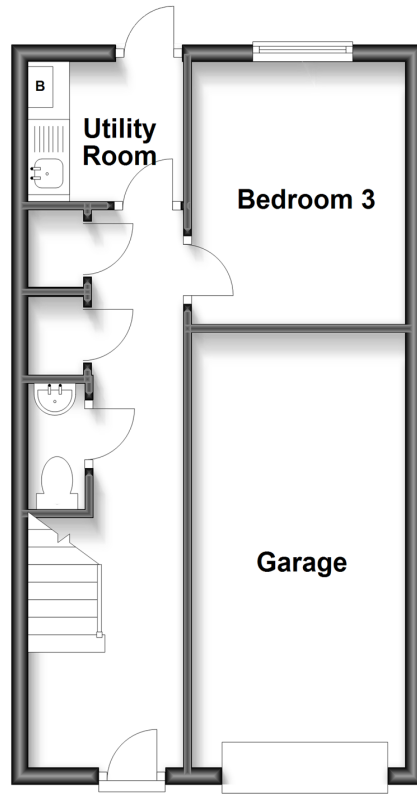


**DOUGLAS
ALLEN**

Helping you move forwards

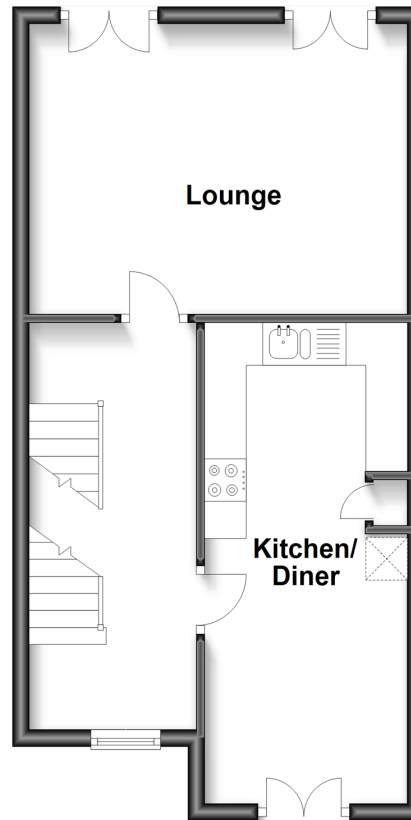
Ground Floor

Approx. 37.7 sq. metres (405.8 sq. feet)



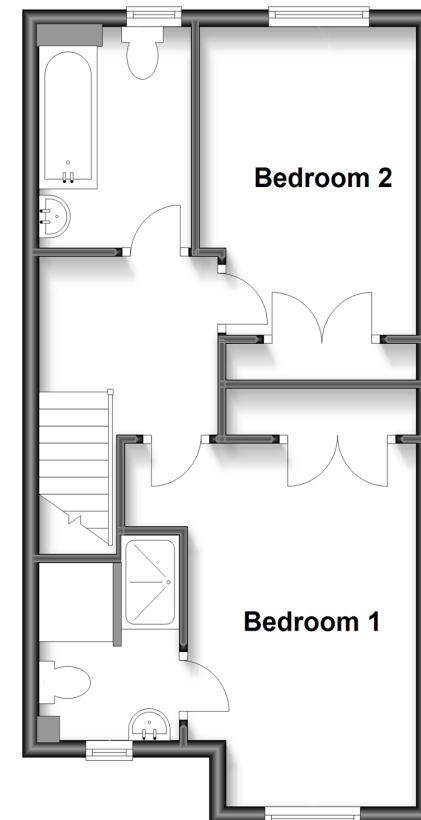
First Floor

Approx. 39.8 sq. metres (428.6 sq. feet)



Second Floor

Approx. 39.9 sq. metres (429.5 sq. feet)



Accommodation

GROUND FLOOR

Entrance Hall
Bedroom 3: 10'2 x 8'5 (3.10m x 2.57m)
Utility Room: 6'1 x 5'5 (1.86m x 1.65m)
Cloakroom
Garage

FIRST FLOOR

Landing
Lounge: 14'8 x 11'1 (4.47m x 3.38m)
Kitchen/Diner: 10'7 x 8'1 (3.23m x 2.47m)
plus 8'4 x 7'1 (2.54m x 2.16m)

SECOND FLOOR

Bedroom 1: 13'10 x 11'5 (4.22m x 3.48m)
En-Suite
Bedroom 2: 11'8 x 8'5 (3.56m x 2.57m)
Bathroom

OUTSIDE

Off Street Parking
Rear Garden



Main features

- Attractive Town House situated in the popular Redbridge Borough
- Large fitted kitchen with ground floor cloakroom & utility area
- Walking distance to bus links & Chadwell Heath station, ideal for daily commuting
- Large rear garden, off street parking & garage
- Close to local Primary & Secondary schools



Nearest Schools

Primary Schools: Grove Primary 0.1 miles, St Bede's Catholic Primary 0.2 miles, Chadwell Primary 0.5 miles

Secondary Schools: Newbridge School 0.3 miles, The Chadwell Heath Foundation School 0.3 miles



Transport Information

Train Stations: Chadwell Heath 1.0 miles, Goodmayes 1.2 miles, Seven Kings 1.8 miles

Underground Newbury Park 2.0 miles, Dagenham Heathway 2.5 miles, Upney 2.7 miles



Address

Norwich Crescent, Chadwell Heath, Essex, RM6



Directions

For directions to this property please contact us.

